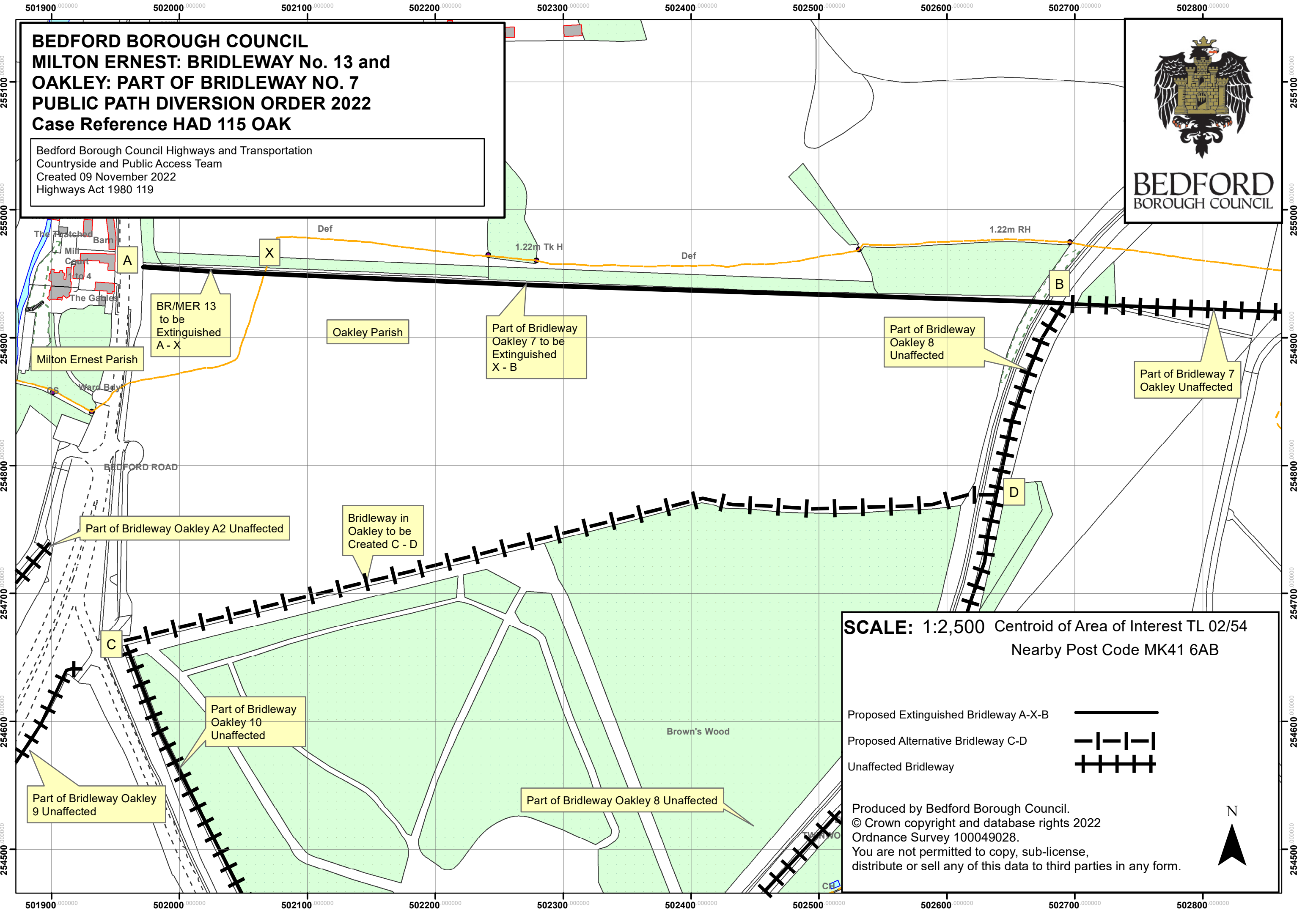


BEDFORD BOROUGH COUNCIL
MILTON ERNEST: BRIDLEWAY No. 13 and
OAKLEY: PART OF BRIDLEWAY NO. 7
PUBLIC PATH DIVERSION ORDER 2022
Case Reference HAD 115 OAK

Bedford Borough Council Highways and Transportation
Countryside and Public Access Team
Created 09 November 2022
Highways Act 1980 119



SCALE: 1:2,500 Centroid of Area of Interest TL 02/54
Nearby Post Code MK41 6AB

- Proposed Extinguished Bridleway A-X-B
- Proposed Alternative Bridleway C-D
- Unaffected Bridleway

Produced by Bedford Borough Council.
© Crown copyright and database rights 2022
Ordnance Survey 100049028.
You are not permitted to copy, sub-license,
distribute or sell any of this data to third parties in any form.

