

# English Index of Multiple Deprivation 2019

## Bedford Borough Council

Produced by  
Population Health,  
Evidence & Intelligence  
October 2019



Public Health:  
Working together to improve the health  
and wellbeing of our communities

# The English Index of Multiple Deprivation 2019

## Bedford Borough Results

### Introduction

The Index of Multiple Deprivation (IMD) is the official measure of relative deprivation in England and is part of a series of outputs making up the English Indices of Deprivation (IoD). IoD 2019 was published on 26<sup>th</sup> September 2019 and replaces the 2015 version. This briefing presents the headline IMD findings from the 2019 publication. The English IoD are published by the Ministry of Housing, Communities & Local Government.

The IoD brings together 39 indicators into seven distinct domains of deprivation covering income, employment, education, health, crime, housing and environment. These are grouped further into the Index of Multiple Deprivation. The IMD is an overall measure of multiple deprivation experienced by people living in an area and is calculated for every Lower-layer Super Output Area (LSOA), or neighbourhood, in England. All neighbourhoods in England are ranked according to their level of deprivation relative to other areas. Average IMD measures are available at local authority level.

### Key Findings – Bedford Borough

- Bedford ranks 96 out of 151 upper tier and unitary local authorities (where 1 is most deprived) and 150 out of 317 lower tier and unitary local authorities. These rankings have changed from 95 out of 152 and 148 out of 326 respectively in 2015, indicating that Bedford now ranks marginally less deprived relative to other local authorities.
- 14 out of 103 LSOAs in Bedford are ranked in the most deprived 20% nationally, with 4 among the most deprived 10%. The most deprived LSOAs are 015F, 012F, 010F and 012A, with 015F ranking in the top 5% in England. The wards associated with the most deprived areas are Cauldwell, Castle and Harpur. The most deprived LSOAs in 2019 were also the most deprived in 2015, however they now rank as slightly less deprived.
- Compared to the 2015 IMD, the number of LSOAs in the most deprived 20% nationally has remained at 14, whilst the number in the most deprived 10% has fallen from 5 to 4.
- Overall, 58 LSOAs rank as less deprived in 2019 than in 2015, and 45 rank as more deprived. Therefore, while Bedford ranks marginally less deprived in 2019, this masks increasing deprivation in some areas.

### Further information

The full IoD data along with technical details and national summary reports can be found here:

<https://www.gov.uk/government/statistics/english-indices-of-deprivation-2019>

A helpful visualisation tool of the national results can be found here:

[http://dclgapps.communities.gov.uk/imd/iod\\_index.html](http://dclgapps.communities.gov.uk/imd/iod_index.html)

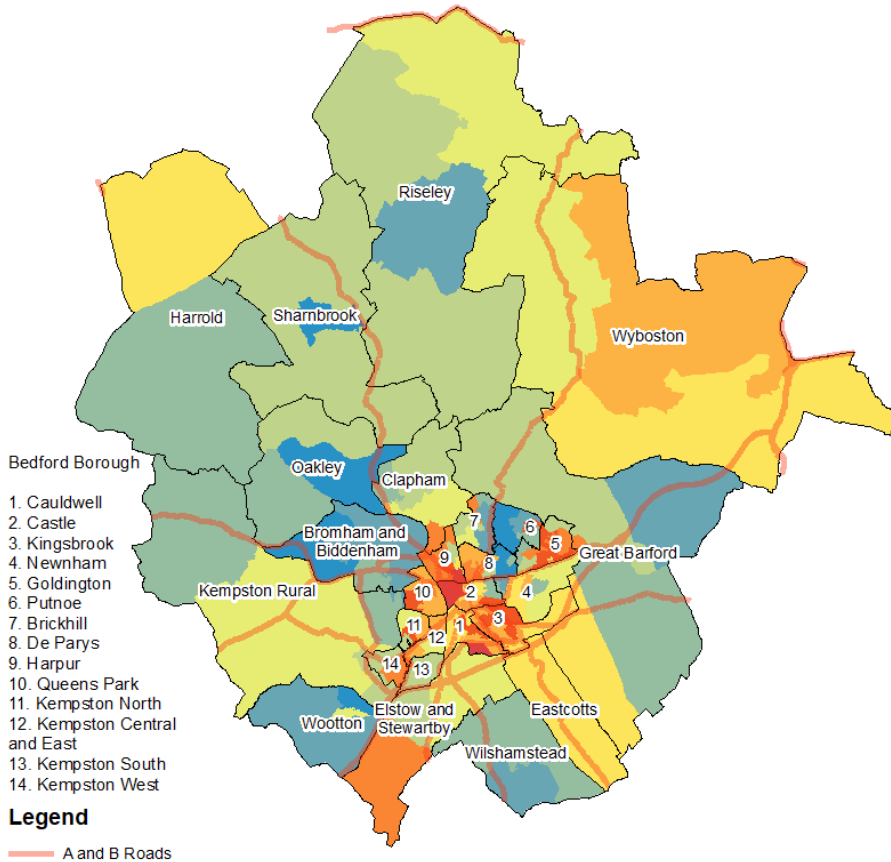
# The English Index of Multiple Deprivation 2019

## Bedford Borough Results

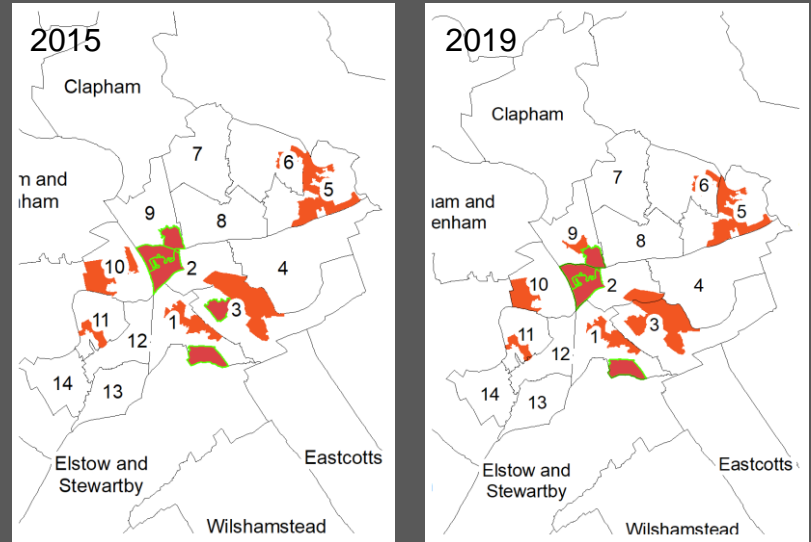
### Index of Multiple Deprivation

The overall Index of Multiple Deprivation (IMD) is a weighted measure based on information relating to income, employment, education, health, crime, housing, and environment.

Map 1: Distribution of the Index of Multiple Deprivation 2019



### Change in areas amongst the most deprived 20% in England



**Legend** ■ 10% most deprived ■ 20% most deprived

