

# Wilshamstead

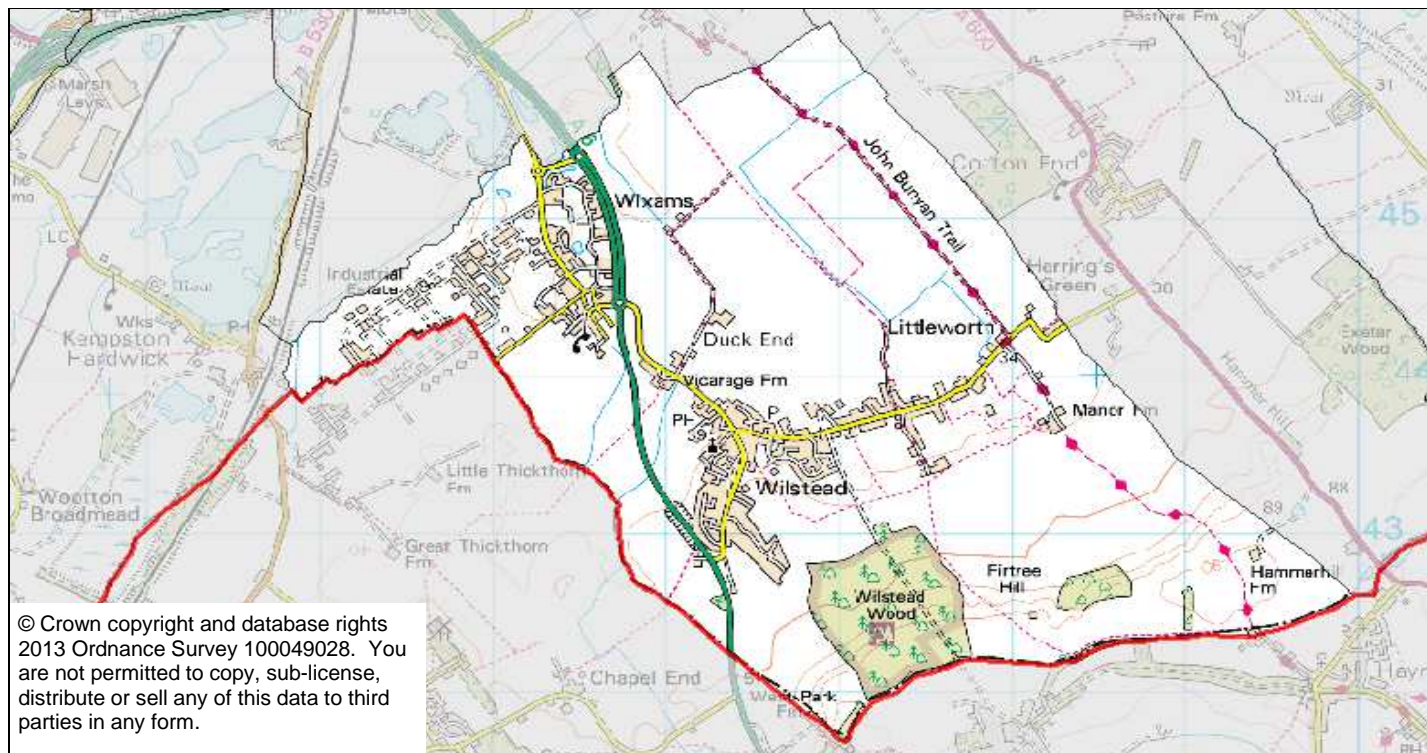
Parish Profile

2011 Census

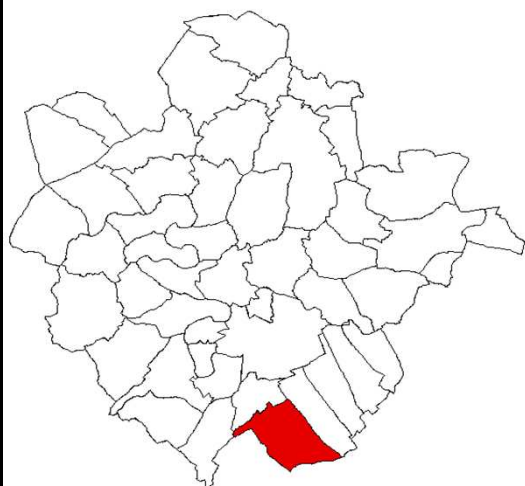
October 2013



**BEDFORD**  
BOROUGH COUNCIL



© Crown copyright and database rights 2013 Ordnance Survey 100049028. You are not permitted to copy, sub-license, distribute or sell any of this data to third parties in any form.



<b>Population</b>	<b>3,270</b>
<b>Area (hectares)</b>	<b>1,263</b>
<b>Population Density (People/hectare)</b>	<b>2.6</b>
<b>Households</b>	<b>1,402</b>
<b>Dwellings</b>	<b>1,466</b>

Located in the south of Bedford Borough, Wilshamstead has an older age profile than the Borough with 18% of residents aged 0-15 and 20% aged over 65. A broad mix of non-White British residents form 13% of the population. The population increased by 1,000 between 2001 and 2011, primarily as a result of the development of Wixams, and will increase significantly in the future. The population structure will also become younger.

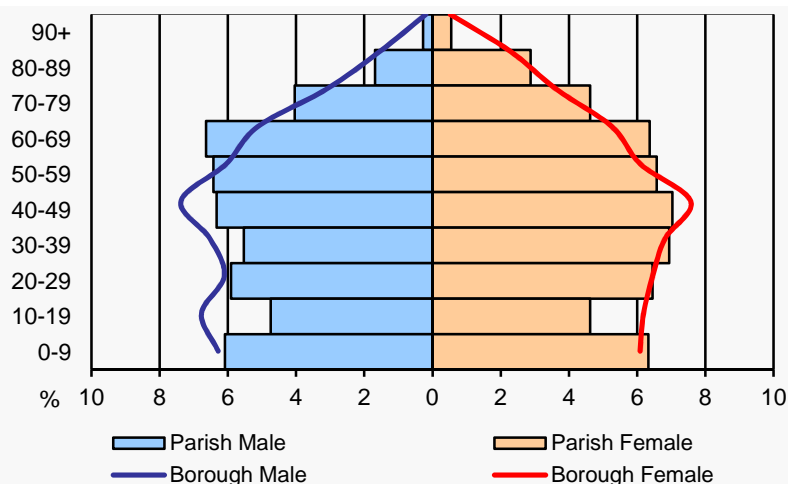
Wilshamstead has high home ownership (80%) with 14% of households renting from social landlords and 6% renting privately. Housing is a mix of detached (40%), semi-detached (24%) and terraced (21%) homes, and mainly heated by gas (81%).

Employment as managers, directors and in professional occupations (30%) matches the Borough average. The proportion of residents aged 16+ with degree-level qualifications (28%) is below the average for rural parishes, and 21% of residents have no qualifications. Health levels are similar to the Borough average.

Households without a car (12%) is among the highest of all parishes, but 38% have 2 cars, and 12% have 3 or more. Most people travel to work by car (84%), commuting by train is low (3%), and only 4% of those in employment cycle or walk to work.

## Population

Age	Parish		Borough
	No.	%	%
0-4	231	7.1	6.4
5-15	362	11.1	13.7
16-17	65	2.0	2.7
18-29	458	14.0	15.1
30-39	408	12.5	13.3
40-49	437	13.4	14.9
50-64	668	20.4	18.1
65-74	356	10.9	8.1
75-84	183	5.6	5.5
85+	102	3.1	2.2
<b>Total</b>	<b>3,270</b>	<b>100</b>	<b>100</b>



Ethnicity	Parish		Borough	Parish (%)
	No.	%	%	
White British	2,859	87.4	71.5	87.4
White Other	142	4.3	9.1	4.3
Mixed/Multiple	94	2.9	3.4	2.9
Asian/Asian British	106	3.2	11.4	3.2
Black/Black British	56	1.7	3.9	1.7
Other	13	0.4	0.7	0.4

Top 3 Countries of Birth in the Parish (excl. UK)	Parish		Top 3 Main Languages in the Parish (excl. English)	Parish	
	No.	%		No.	%
India	26	0.8	Polish	22	0.7
Ireland	21	0.6	Panjabi	11	0.4
Poland	21	0.6	Gujarati	7	0.2

Religion or Belief	Parish		Borough	Parish (%)
	No.	%	%	
Christian	2,042	62.4	59.3	62.4
Other Religion	146	4.5	10.5	4.5
No Religion	877	26.8	23.6	26.8
Not Stated	205	6.3	6.6	6.3

Marital & Civil Partnership Status 16+	Parish		Borough	Parish (%)
	No.	%	%	
Single	718	26.8	31.9	26.8
Married	1,433	53.5	49.2	53.5
Civil Partnership	6	0.2	0.2	0.2
Separated/Divorced	291	10.9	12.0	10.9
Widowed	229	8.6	6.7	8.6

## Housing & Households

Household Composition	Parish		Borough	Household Composition	Parish		Borough
	No.	%	%		No.	%	%
1 Person: Pensioner	205	14.6	11.9	Lone Parent: With DC	89	6.3	7.6
1 Person: Other	140	10.0	16.9	Lone Parent: No DC	43	3.1	3.4
Couple: With DC	270	19.3	20.9	Couple: Both 65+	136	9.7	8.2
Couple: No DC	447	31.9	23.5	Other	72	5.1	7.5
				<b>All Households</b>	<b>1,402</b>	<b>100</b>	<b>100</b>

DC (Dependent Children) = Aged 0-15 and/or aged 16-18 if in full time education

Accommodation Type	Parish		Borough	Parish (%)
	No.	%	%	
Detached	584	39.8	27.4	39.8
Semi-Detached	346	23.6	32.2	23.6
Terrace	310	21.1	21.9	21.1
Flat	33	2.3	17.6	2.3
Caravan/Mobile	193	13.2	0.9	13.2

Household Tenure	Parish		Borough	Parish (%)
	No.	%	%	
Owned	1,123	80.1	66.8	80.1
Social Rented	199	14.2	16.1	14.2
Private Rented	80	5.7	17.2	5.7

Central Heating	Parish		Borough	Parish (%)
	No.	%	%	
None	12	0.9	2.0	0.9
Gas	1,141	81.4	77.2	81.4
Electric	118	8.4	9.5	8.4
Oil	45	3.2	5.1	3.2
Solid Fuel	7	0.5	0.6	0.5
2+ Types/Other	79	5.6	5.6	5.6

## Health

General Health	Parish		Borough	Disability & Unpaid Carers	Parish		Borough
	No.	%	%		No.	%	%
Very Good	1,533	46.9	46.9	<b>Long Term Illness/Disability</b>			
Good	1,196	36.6	36.0	Limited a Lot*	219	6.7	7.1
Fair	405	12.4	12.6	Limited a Little*	335	10.2	8.9
Bad	107	3.3	3.6	<b>Unpaid Carers</b>			
Very Bad	29	0.9	1.0	1-49 hours per week	289	8.8	8.2
				50+ hours per week	79	2.4	2.0

\* = Day-to-day activities

Sources: ONS 2011 Census Tables: QS113 Household Composition - Households; KS401 Households; Dwellings, Household Spaces and Accommodation Type (based on household spaces); QS405 Tenure - Households (Private Rent includes Living Rent Free); QS415 Central Heating; QS302 General Health; QS303 Long Term Health Problem or Disability; QS301 Provision of Unpaid Care. ©Crown Copyright 2013.

## Economic Activity

Economic Activity (16-74)	Parish		Borough	Economic Activity (16-74)	Parish		Borough
	No.	%	%		No.	%	%
<b>Active</b>	<b>1,751</b>	<b>73.2</b>	<b>71.9</b>	<b>Inactive</b>	<b>641</b>	<b>26.8</b>	<b>28.1</b>
FT Employee	1,052	44.0	40.4	Retired	396	16.6	12.8
PT Employee	309	12.9	13.9	Student	71	3.0	5.5
Self-Employed	246	10.3	9.5	Looking After Home	89	3.7	4.3
Unemployed	90	3.8	4.4	Sick/Disabled	43	1.8	3.3
Full-Time Student	54	2.3	3.6	Other	42	1.8	2.3

Occupation (16-74)	Parish		Borough
	No.	%	%
Managers, Directors & Senior Officials, Professional Occupations	492	29.8	29.0
Associate Professional & Technical Occupations	229	13.9	12.3
Skilled Trades	185	11.2	11.0
Administrative & Secretarial Occupations	228	13.8	11.2
Caring, Leisure & Other Services, Sales & Customer Service	278	16.8	17.2
Process, Plant & Machine Operatives, Elementary Occupations	240	14.5	19.3

## Highest Level Qualification

Highest Level Qualification (16+)	Parish		Borough
	No.	%	%
Level 4+ (Degree)	761	28.4	28.1
Level 3 (A Level)	297	11.1	11.8
Apprenticeship	134	5.0	3.9
Level 1 or 2 (GCSE)	779	29.1	29.0
Other	132	4.9	6.8
No Qualifications	574	21.4	20.4

## Car Ownership

Cars/Vans in Household	Parish		Borough
	No.	%	%
No Cars	171	12.2	20.6
1 Car	530	37.8	41.8
2 Cars	534	38.1	28.3
3 Cars	123	8.8	6.8
4+ Cars	44	3.1	2.6
<b>Total Cars in Parish</b>	<b>2,164</b>	<b>-</b>	<b>-</b>

## Travel to Work

Method of Travel to Work (16-74)	Parish		Borough	Parish (%)
	No.	%	%	
Work At/From Home	83	5.0	5.6	5.0
Train	47	2.8	4.9	2.8
Bus/Coach/Taxi	47	2.8	4.7	2.8
Car/Motorcycle	1,394	84.4	69.8	84.4
Bicycle	19	1.2	3.8	1.2
Foot	52	3.1	10.6	3.1

Sources: ONS 2011 Census Tables: QS601 Economic Activity; QS606 Occupation; QS501 Highest Level of Qualification Gained; QS416 Car or Van Availability; QS701 Method of Travel to Work. ©Crown Copyright 2013.

**Notes:** This profile is based upon 2011 Census data from the Office for National Statistics. © Crown Copyright 2013. ONS has swapped some records to ensure that no details of any individual or household are revealed. This may affect the accuracy of the data, particularly small numbers.

**Compiled by:** Community Intelligence Team, Corporate Policy, Bedford Borough Council.  
Contact: [intelligence@bedford.gov.uk](mailto:intelligence@bedford.gov.uk)  
[www.bedford.gov.uk/intelligence](http://www.bedford.gov.uk/intelligence)  
Tel: (01234) 228079