

Melchbourne & Yelden 2011 Census

Parish Profile

October 2013



BEDFORD
BOROUGH COUNCIL



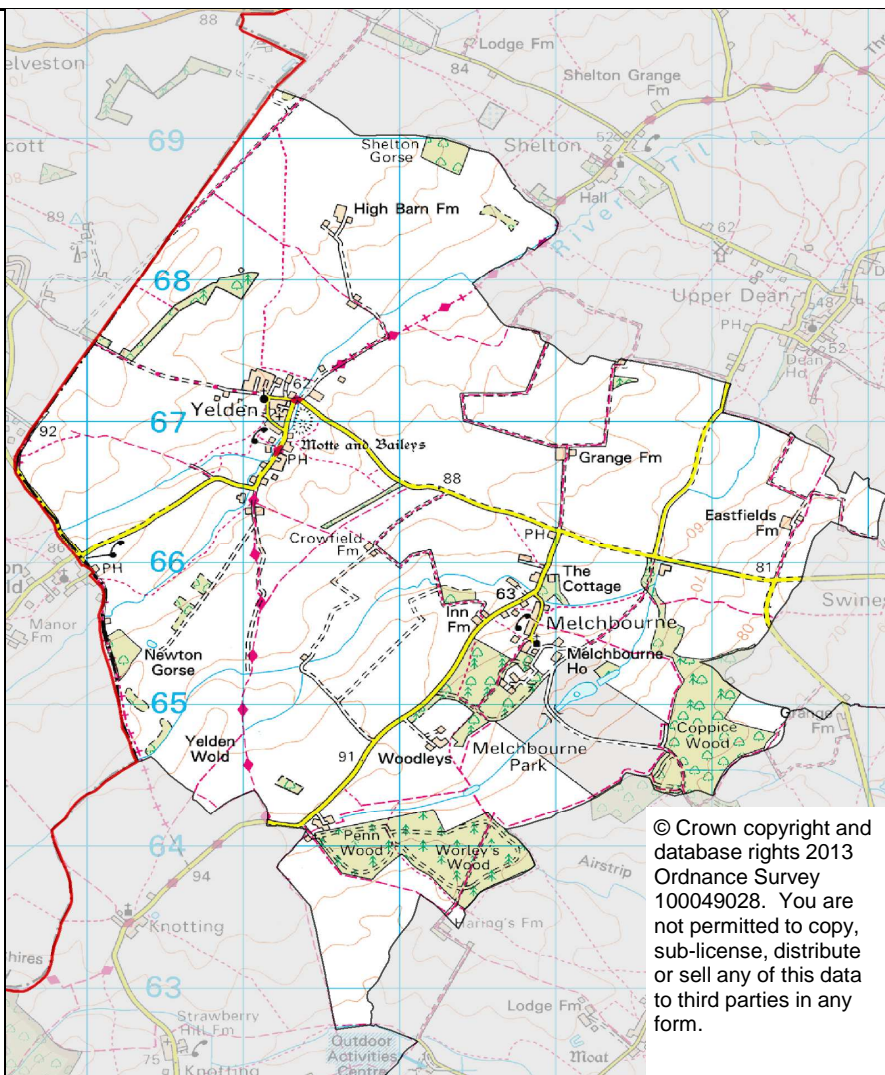
Population 392

Area (hectares) 1,888

**Population Density
(People/hectare)** 0.2

Households 156

Dwellings 176



Located on the northern boundary of Bedford Borough, Melchbourne and Yelden has an older age profile than the Borough with a relatively low proportion of residents aged 18-39 (15%) and large numbers aged 40-74 (59%). The non-White British population is 8% of the total.

The proportion of one-person households (16%) is among the lowest of all parishes. Melchbourne and Yelden has high home ownership (81%) with 15% of households renting privately and 4% from social landlords. Housing is predominantly detached (68%) and heated by oil (59%).

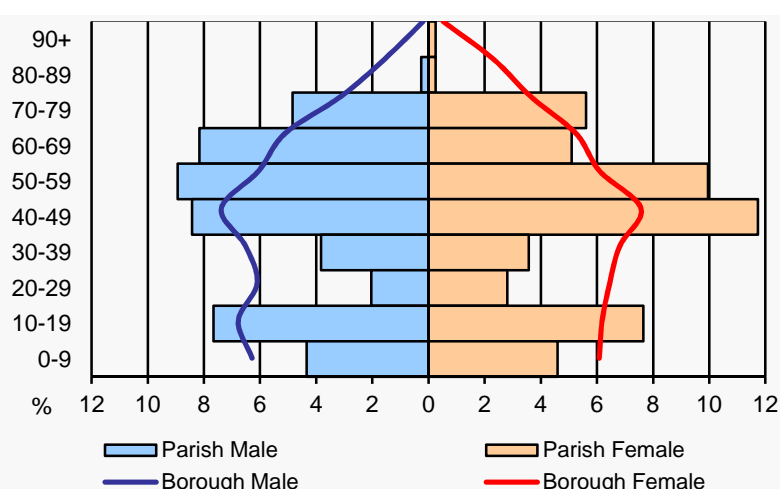
Employment as managers, directors and in professional occupations (40%) exceeds the average for all parishes. Self employment (16%) is also high and 14% of those in employment work from home.

The proportion of residents aged 16+ with degree-level qualifications (38%) is above the average for all parishes and only 15% have no qualifications. Relatively few residents have a long-term illness or disability, or report poor health.

Only 5% of households do not have car, 47% have 2 cars, and 24% have 3 or more. Commuting by train (6%) is above the Borough average, most people (74%) travel to work by car, and only 4% of those in employment cycle or walk to work.

Population

Age	Parish		Borough
	No.	%	%
0-4	14	3.6	6.4
5-15	56	14.3	13.7
16-17	13	3.3	2.7
18-29	31	7.9	15.1
30-39	29	7.4	13.3
40-49	79	20.2	14.9
50-64	106	27.0	18.1
65-74	46	11.7	8.1
75-84	17	4.3	5.5
85+	1	0.3	2.2
Total	392	100	100



Ethnicity	Parish		Borough	Parish (%)	
	No.	%	%		
White British	359	91.6	71.5	91.6	
White Other	13	3.3	9.1	3.3	
Mixed/Multiple	8	2.0	3.4	2.0	
Asian/Asian British	12	3.1	11.4	3.1	
Black/Black British	0	0.0	3.9	0.0	
Other	0	0.0	0.7	0.0	

Top 3 Countries of Birth in the Parish (excl. UK)	Parish		Top 3 Main Languages in the Parish (excl. English)	Parish	
	No.	%		No.	%
None	0	0.0	None	0	0.0
None	0	0.0	None	0	0.0
None	0	0.0	None	0	0.0

Religion or Belief	Parish		Borough	Parish (%)	
	No.	%	%		
Christian	250	63.8	59.3	63.8	
Other Religion	10	2.6	10.5	2.6	
No Religion	108	27.6	23.6	27.6	
Not Stated	24	6.1	6.6	6.1	

Marital & Civil Partnership Status 16+	Parish		Borough	Parish (%)	
	No.	%	%		
Single	57	17.7	31.9	17.7	
Married	218	67.7	49.2	67.7	
Civil Partnership	0	0.0	0.2	0.0	
Separated/Divorced	37	11.5	12.0	11.5	
Widowed	10	3.1	6.7	3.1	

Housing & Households

Household Composition	Parish		Borough	Household Composition	Parish		Borough
	No.	%	%		No.	%	%
1 Person: Pensioner	13	8.3	11.9	Lone Parent: With DC	4	2.6	7.6
1 Person: Other	13	8.3	16.9	Lone Parent: No DC	1	0.6	3.4
Couple: With DC	40	25.6	20.9	Couple: Both 65+	19	12.2	8.2
Couple: No DC	56	35.9	23.5	Other	10	6.4	7.5
				All Households	156	100	100

DC (Dependent Children) = Aged 0-15 and/or aged 16-18 if in full time education

Accommodation Type	Parish		Borough	Parish (%)
	No.	%	%	
Detached	120	68.2	27.4	68.2
Semi-Detached	18	10.2	32.2	10.2
Terrace	27	15.3	21.9	15.3
Flat	11	6.3	17.6	6.3
Caravan/Mobile	0	0.0	0.9	0.0

Household Tenure	Parish		Borough	Parish (%)
	No.	%	%	
Owned	127	81.4	66.8	81.4
Social Rented	6	3.8	16.1	3.8
Private Rented	23	14.7	17.2	14.7

Central Heating	Parish		Borough	Parish (%)
	No.	%	%	
None	7	4.5	2.0	4.5
Gas	9	5.8	77.2	5.8
Electric	19	12.2	9.5	12.2
Oil	92	59.0	5.1	59.0
Solid Fuel	8	5.1	0.6	5.1
2+ Types/Other	21	13.5	5.6	13.5

Health

General Health	Parish		Borough	Disability & Unpaid Carers	Parish		Borough
	No.	%	%		No.	%	%
Very Good	211	53.8	46.9	Long Term Illness/Disability			
Good	137	34.9	36.0	Limited a Lot*	11	2.8	7.1
Fair	31	7.9	12.6	Limited a Little*	27	6.9	8.9
Bad	12	3.1	3.6	Unpaid Carers			
Very Bad	1	0.3	1.0	1-49 hours per week	29	7.4	8.2
				50+ hours per week	4	1.0	2.0

* = Day-to-day activities

Economic Activity

Economic Activity (16-74)	Parish		Borough	Economic Activity (16-74)	Parish		Borough
	No.	%	%		No.	%	%
Active	218	71.7	71.9	Inactive	86	28.3	28.1
FT Employee	113	37.2	40.4	Retired	43	14.1	12.8
PT Employee	41	13.5	13.9	Student	18	5.9	5.5
Self-Employed	49	16.1	9.5	Looking After Home	17	5.6	4.3
Unemployed	9	3.0	4.4	Sick/Disabled	2	0.7	3.3
Full-Time Student	6	2.0	3.6	Other	6	2.0	2.3

Occupation (16-74)	Parish		Borough
	No.	%	%
Managers, Directors & Senior Officials, Professional Occupations	84	40.4	29.0
Associate Professional & Technical Occupations	31	14.9	12.3
Skilled Trades	25	12.0	11.0
Administrative & Secretarial Occupations	21	10.1	11.2
Caring, Leisure & Other Services, Sales & Customer Service	24	11.5	17.2
Process, Plant & Machine Operatives, Elementary Occupations	23	11.1	19.3

Highest Level Qualification

Highest Level Qualification (16+)	Parish		Borough
	No.	%	%
Level 4+ (Degree)	121	37.6	28.1
Level 3 (A Level)	45	14.0	11.8
Apprenticeship	10	3.1	3.9
Level 1 or 2 (GCSE)	89	27.6	29.0
Other	9	2.8	6.8
No Qualifications	48	14.9	20.4

Car Ownership

Cars/Vans in Household	Parish		Borough
	No.	%	%
No Cars	8	5.1	20.6
1 Car	38	24.4	41.8
2 Cars	73	46.8	28.3
3 Cars	25	16.0	6.8
4+ Cars	12	7.7	2.6
Total Cars in Parish	313	-	-

Travel to Work

Method of Travel to Work (16-74)	Parish		Borough	Parish (%)
	No.	%	%	
Work At/From Home	29	13.9	5.6	13.9
Train	13	6.3	4.9	6.3
Bus/Coach/Taxi	2	1.0	4.7	1.0
Car/Motorcycle	154	74.0	69.8	74.0
Bicycle	2	1.0	3.8	1.0
Foot	7	3.4	10.6	3.4

Sources: ONS 2011 Census Tables: QS601 Economic Activity; QS606 Occupation; QS501 Highest Level of Qualification Gained; QS416 Car or Van Availability; QS701 Method of Travel to Work. ©Crown Copyright 2013.

Notes: This profile is based upon 2011 Census data from the Office for National Statistics. © Crown Copyright 2013. ONS has swapped some records to ensure that no details of any individual or household are revealed. This may affect the accuracy of the data, particularly small numbers.

Compiled by: Community Intelligence Team, Corporate Policy, Bedford Borough Council.
Contact: intelligence@bedford.gov.uk
www.bedford.gov.uk/intelligence
Tel: (01234) 228079