

# Harrold

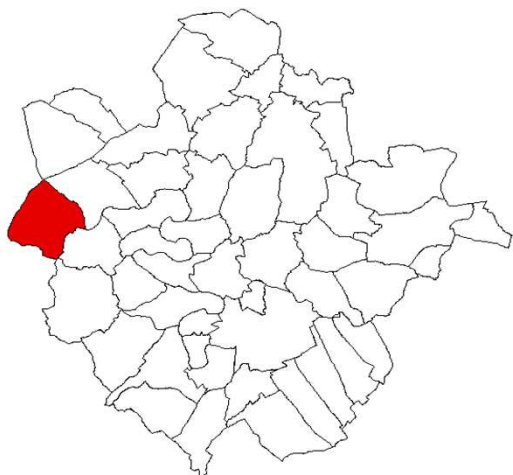
## Parish Profile

2011 Census

October 2013



**BEDFORD**  
BOROUGH COUNCIL



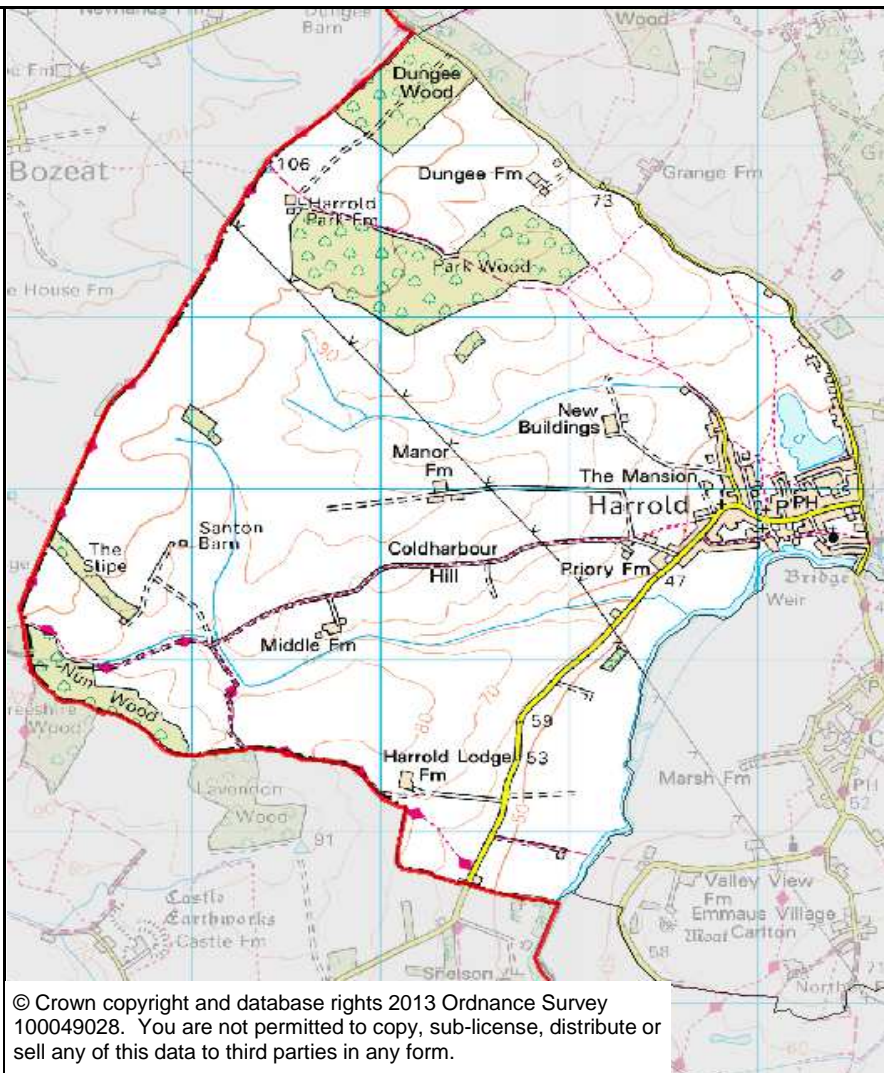
**Population** 1,691

**Area (hectares)** 1,310

**Population Density  
(People/hectare)** 1.3

**Households** 706

**Dwellings** 736



Located on the western boundary of Bedford Borough, Harrold has a broadly similar age profile to the Borough but with a higher proportion aged 0-15 (24%). A broad mix of non-White British residents form 8% of the population. Harrold's population rose by an estimated 460 between 2001 and 2011.

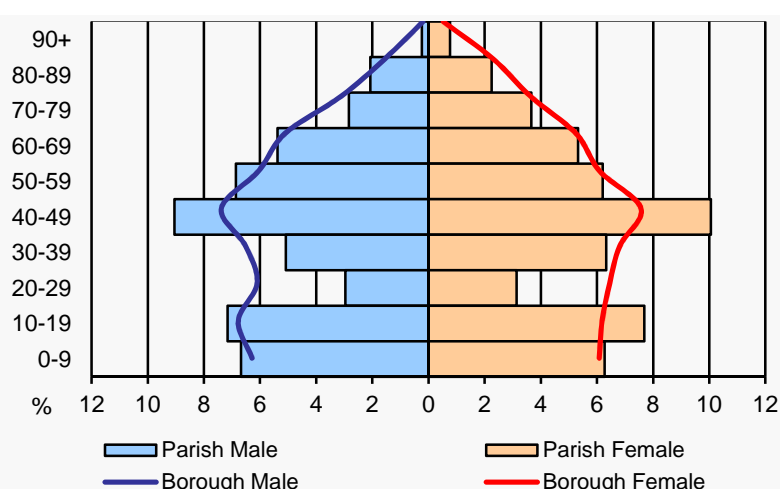
The proportion of one-person households (32%) is the second highest of all rural parishes, with the majority being non-pensioner households. Harrold has high home ownership (74%) with 10% of households renting from social landlords and 16% renting privately. Detached homes form 41% of all dwellings, but there are also high numbers of terraced (27%) houses, semi-detached (23%) and flats (9%). Most homes are heated by gas (70%) and 10% by oil.

Employment as managers, directors and in professional occupations (41%) exceeds the average for all parishes. Self employment (16%) and employment in skilled trades (12%) are also high. The proportion of residents aged 16+ with degree-level qualifications (42%) is well above the rural average. The health of residents is better than Borough averages.

The level of households without a car (12%) is among the highest of all parishes, but 37% have 2 cars, and 11% have 3 or more. Most people (75%) travel to work by car, 4% commute by train, but 8% cycle or walk to work, which is above the average for all parishes.

## Population

Age	Parish		Borough
	No.	%	%
0-4	99	5.9	6.4
5-15	302	17.9	13.7
16-17	47	2.8	2.7
18-29	125	7.4	15.1
30-39	193	11.4	13.3
40-49	323	19.1	14.9
50-64	324	19.2	18.1
65-74	135	8.0	8.1
75-84	99	5.9	5.5
85+	44	2.6	2.2
<b>Total</b>	<b>1,691</b>	<b>100</b>	<b>100</b>



Ethnicity	Parish		Borough	Parish (%)	
	No.	%	%		
White British	1,557	92.1	71.5	92.1	
White Other	55	3.3	9.1	3.3	
Mixed/Multiple	32	1.9	3.4	1.9	
Asian/Asian British	27	1.6	11.4	1.6	
Black/Black British	9	0.5	3.9	0.5	
Other	11	0.7	0.7	0.7	

Top 3 Countries of Birth in the Parish (excl. UK)	Parish		Top 3 Main Languages in the Parish (excl. English)	Parish	
	No.	%		No.	%
Germany	14	0.8	Chinese	3	0.2
Ireland	9	0.5	Italian	3	0.2
Italy	7	0.4	Nepalese	3	0.2

Religion or Belief	Parish		Borough	Parish (%)	
	No.	%	%		
Christian	1,022	60.4	59.3	60.4	
Other Religion	38	2.2	10.5	2.2	
No Religion	511	30.2	23.6	30.2	
Not Stated	120	7.1	6.6	7.1	

Marital & Civil Partnership Status 16+	Parish		Borough	Parish (%)	
	No.	%	%		
Single	332	25.7	31.9	25.7	
Married	719	55.7	49.2	55.7	
Civil Partnership	2	0.2	0.2	0.2	
Separated/Divorced	156	12.1	12.0	12.1	
Widowed	81	6.3	6.7	6.3	

## Housing & Households

Household Composition	Parish		Borough	Household Composition	Parish		Borough
	No.	%	%		No.	%	%
1 Person: Pensioner	91	12.9	11.9	Lone Parent: With DC	44	6.2	7.6
1 Person: Other	134	19.0	16.9	Lone Parent: No DC	13	1.8	3.4
Couple: With DC	189	26.8	20.9	Couple: Both 65+	66	9.3	8.2
Couple: No DC	142	20.1	23.5	Other	27	3.9	7.5
				<b>All Households</b>	<b>706</b>	<b>100</b>	<b>100</b>

DC (Dependent Children) = Aged 0-15 and/or aged 16-18 if in full time education

Accommodation Type	Parish		Borough	Parish (%)
	No.	%	%	
Detached	302	41.0	27.4	41.0
Semi-Detached	166	22.6	32.2	22.6
Terrace	200	27.2	21.9	27.2
Flat	68	9.2	17.6	9.2
Caravan/Mobile	0	0.0	0.9	0.0

Household Tenure	Parish		Borough	Parish (%)
	No.	%	%	
Owned	522	73.9	66.8	73.9
Social Rented	68	9.6	16.1	9.6
Private Rented	116	16.4	17.2	16.4

Central Heating	Parish		Borough	Parish (%)
	No.	%	%	
None	19	2.7	2.0	2.7
Gas	494	70.0	77.2	70.0
Electric	67	9.5	9.5	9.5
Oil	71	10.1	5.1	10.1
Solid Fuel	12	1.7	0.6	1.7
2+ Types/Other	43	6.1	5.6	6.1

## Health

General Health	Parish		Borough	Disability & Unpaid Carers	Parish		Borough
	No.	%	%		No.	%	%
Very Good	960	56.8	46.9	<b>Long Term Illness/Disability</b>			
Good	509	30.1	36.0	Limited a Lot*	87	5.1	7.1
Fair	178	10.5	12.6	Limited a Little*	142	8.4	8.9
Bad	35	2.1	3.6	<b>Unpaid Carers</b>			
Very Bad	9	0.5	1.0	1-49 hours per week	135	8.0	8.2
				50+ hours per week	20	1.2	2.0

\* = Day-to-day activities

Sources: ONS 2011 Census Tables: QS113 Household Composition - Households; KS401 Households; Dwellings, Household Spaces and Accommodation Type (based on household spaces); QS405 Tenure - Households (Private Rent includes Living Rent Free); QS415 Central Heating; QS302 General Health; QS303 Long Term Health Problem or Disability; QS301 Provision of Unpaid Care. ©Crown Copyright 2013.

## Economic Activity

Economic Activity (16-74)	Parish		Borough	Economic Activity (16-74)	Parish		Borough
	No.	%	%		No.	%	%
<b>Active</b>	<b>850</b>	<b>74.1</b>	<b>71.9</b>	<b>Inactive</b>	<b>297</b>	<b>25.9</b>	<b>28.1</b>
FT Employee	458	39.9	40.4	Retired	143	12.5	12.8
PT Employee	157	13.7	13.9	Student	53	4.6	5.5
Self-Employed	184	16.0	9.5	Looking After Home	55	4.8	4.3
Unemployed	28	2.4	4.4	Sick/Disabled	26	2.3	3.3
Full-Time Student	23	2.0	3.6	Other	20	1.7	2.3

Occupation (16-74)	Parish		Borough
	No.	%	%
Managers, Directors & Senior Officials, Professional Occupations	339	41.3	29.0
Associate Professional & Technical Occupations	130	15.8	12.3
Skilled Trades	102	12.4	11.0
Administrative & Secretarial Occupations	88	10.7	11.2
Caring, Leisure & Other Services, Sales & Customer Service	90	11.0	17.2
Process, Plant & Machine Operatives, Elementary Occupations	72	8.8	19.3

## Highest Level Qualification

Highest Level Qualification (16+)	Parish		Borough
	No.	%	%
Level 4+ (Degree)	545	42.2	28.1
Level 3 (A Level)	153	11.9	11.8
Apprenticeship	55	4.3	3.9
Level 1 or 2 (GCSE)	324	25.1	29.0
Other	34	2.6	6.8
No Qualifications	179	13.9	20.4

## Car Ownership

Cars/Vans in Household	Parish		Borough
	No.	%	%
No Cars	84	11.9	20.6
1 Car	280	39.7	41.8
2 Cars	261	37.0	28.3
3 Cars	62	8.8	6.8
4+ Cars	19	2.7	2.6
<b>Total Cars in Parish</b>	<b>1,067</b>	<b>-</b>	<b>-</b>

## Travel to Work

Method of Travel to Work (16-74)	Parish		Borough	Parish (%)
	No.	%	%	
Work At/From Home	80	9.7	5.6	9.7
Train	35	4.3	4.9	4.3
Bus/Coach/Taxi	18	2.2	4.7	2.2
Car/Motorcycle	619	75.4	69.8	75.4
Bicycle	19	2.3	3.8	2.3
Foot	43	5.2	10.6	5.2

Sources: ONS 2011 Census Tables: QS601 Economic Activity; QS606 Occupation; QS501 Highest Level of Qualification Gained; QS416 Car or Van Availability; QS701 Method of Travel to Work. ©Crown Copyright 2013.

**Notes:** This profile is based upon 2011 Census data from the Office for National Statistics. © Crown Copyright 2013. ONS has swapped some records to ensure that no details of any individual or household are revealed. This may affect the accuracy of the data, particularly small numbers.

**Compiled by:** Community Intelligence Team, Corporate Policy, Bedford Borough Council.  
Contact: [intelligence@bedford.gov.uk](mailto:intelligence@bedford.gov.uk)  
[www.bedford.gov.uk/intelligence](http://www.bedford.gov.uk/intelligence)  
Tel: (01234) 228079