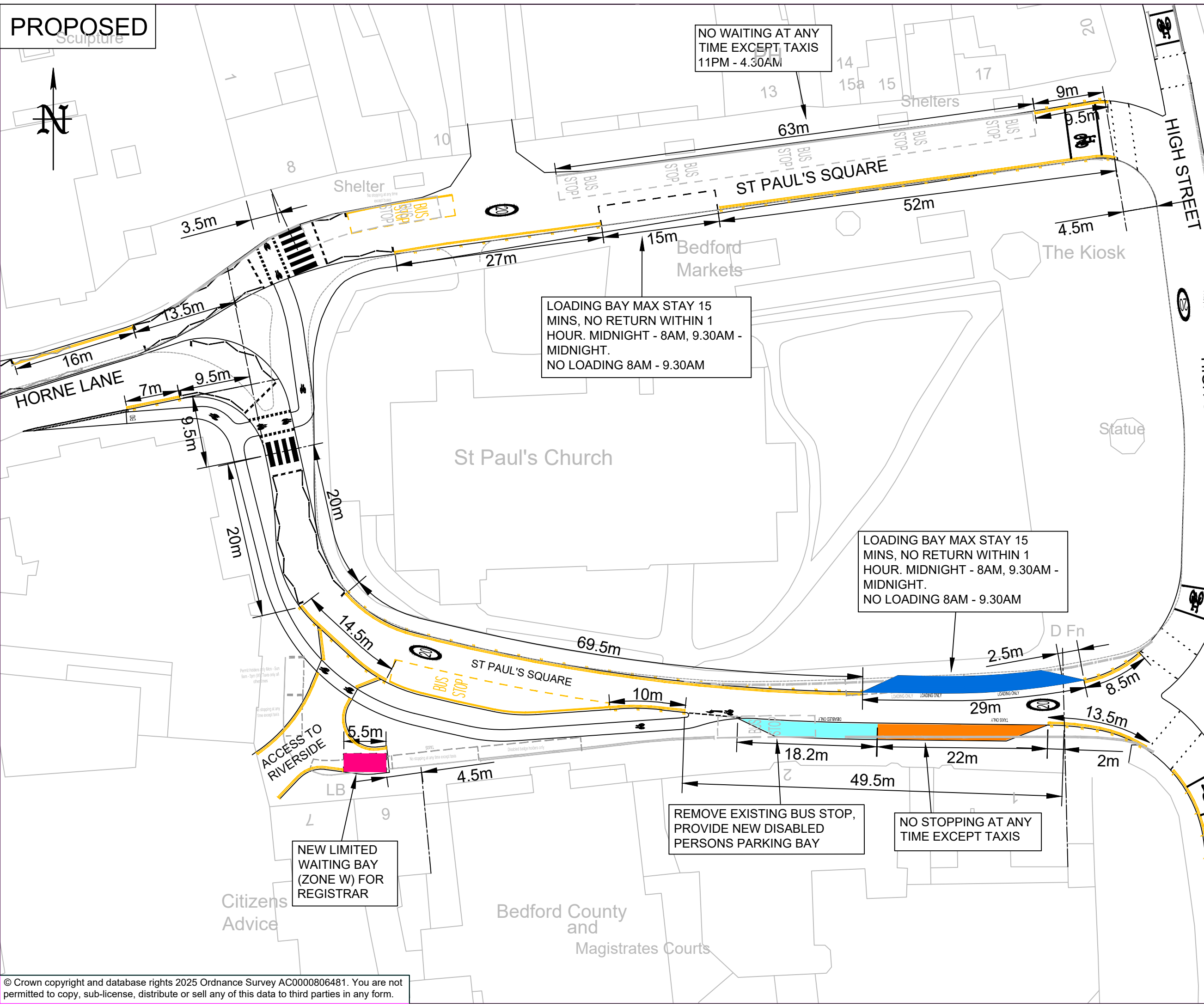


PROPOSED



- KEY:**
- New 75mm wide double yellow lines (to match existing) to Diagram 1018.1 of the Traffic Signs Regulations and General Directions 2016.
 - New disabled persons parking bay
 - New Taxi only parking bay
 - New Registrar Only parking bay
 - New loading bay

LOADING BAY MAX STAY 15 MINS, NO RETURN WITHIN 1 HOUR. MIDNIGHT - 8AM, 9.30AM - MIDNIGHT. NO LOADING 8AM - 9.30AM

LOADING BAY MAX STAY 15 MINS, NO RETURN WITHIN 1 HOUR. MIDNIGHT - 8AM, 9.30AM - MIDNIGHT. NO LOADING 8AM - 9.30AM

REMOVE EXISTING BUS STOP, PROVIDE NEW DISABLED PERSONS PARKING BAY

NO STOPPING AT ANY TIME EXCEPT TAXIS

NEW LIMITED WAITING BAY (ZONE W) FOR REGISTRAR

NO WAITING AT ANY TIME EXCEPT TAXIS 11PM - 4.30AM

19/03/2025	Consultation	2	GM
06/03/2025	Dy lines added to Riverside access	1	GM
26/02/2025	First Issue	0	GM
DATE	AMENDMENTS	REV	BY



Traffic Management
BOROUGH HALL, CAULDWELL ST, BEDFORD, MK42 9AP
Tel. (01234) 267422

CLIENT
Environment

SCHEME
Town Deal St Paul's Square, Bedford

DRAWING TITLE
Proposed parking restrictions, Loading Bays, Disabled Parking & Taxi parking bays

DRG STATUS Consultation			
SCALE @ A3 NTS	DATE 17/01/2025	DRAWN GM	CHECKED AP