

Dean & Shelton

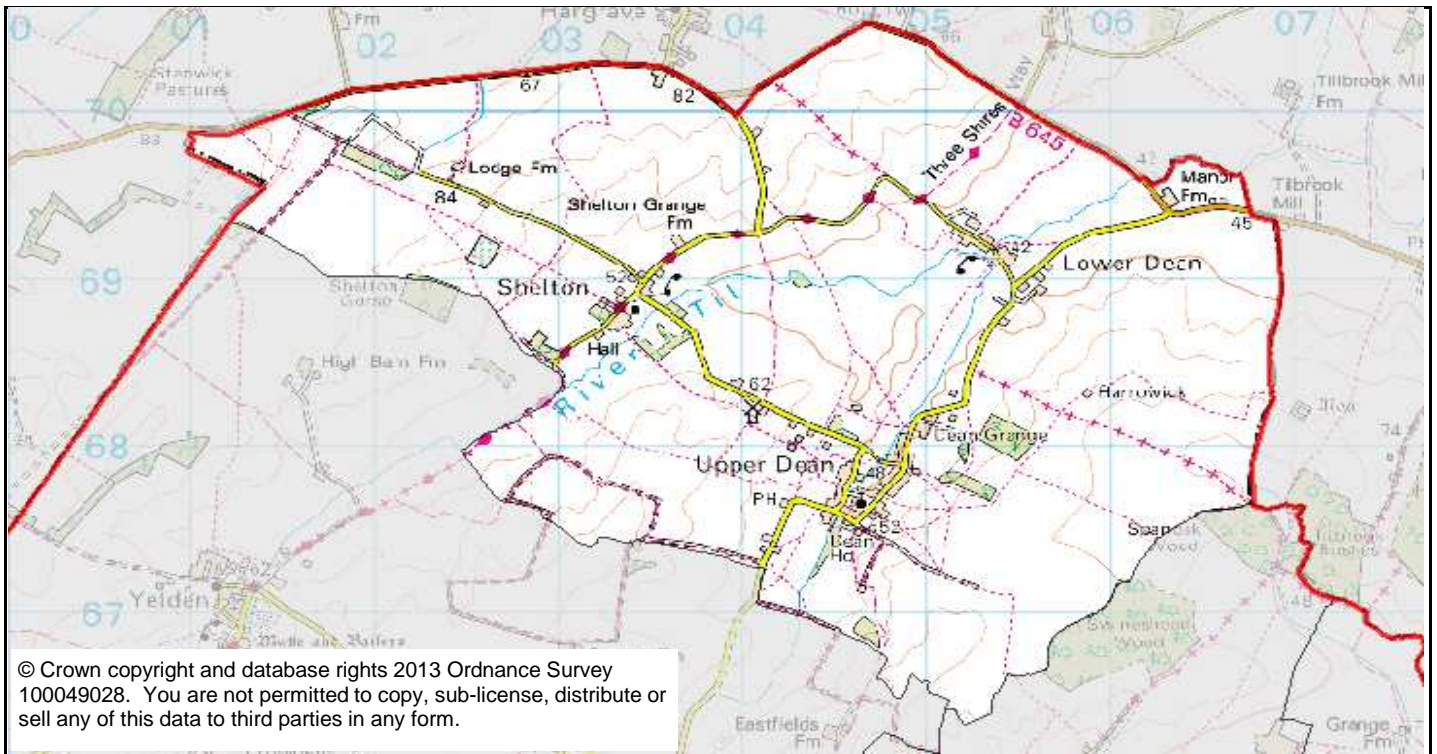
Parish Profile

2011 Census

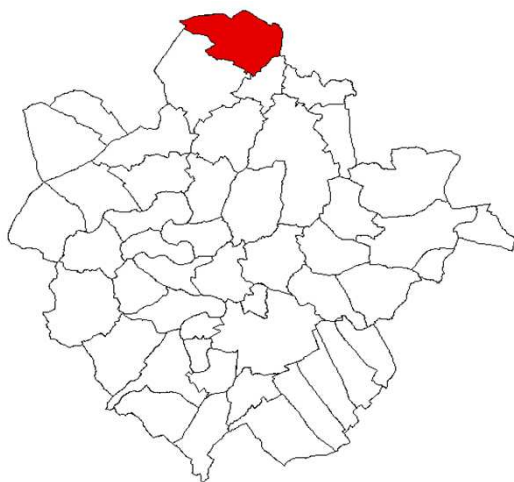
October 2013



BEDFORD
BOROUGH COUNCIL



© Crown copyright and database rights 2013 Ordnance Survey 100049028. You are not permitted to copy, sub-license, distribute or sell any of this data to third parties in any form.



Population	418
Area (hectares)	1,383
Population Density (People/hectare)	0.3
Households	157
Dwellings	167

Located on the northern boundary of Bedford Borough, Dean and Shelton has an older age profile than the Borough with a high proportion of residents aged 40-74, and few aged 20-39. The non-White British population is 8% of the total.

There is a low proportion of one-person households (18%), evenly divided between pensioners and non-pensioners. Home ownership (78%) is high, with 6% of households renting from social landlords and 17% renting privately. Two-thirds of houses are detached and almost 70% are heated by oil.

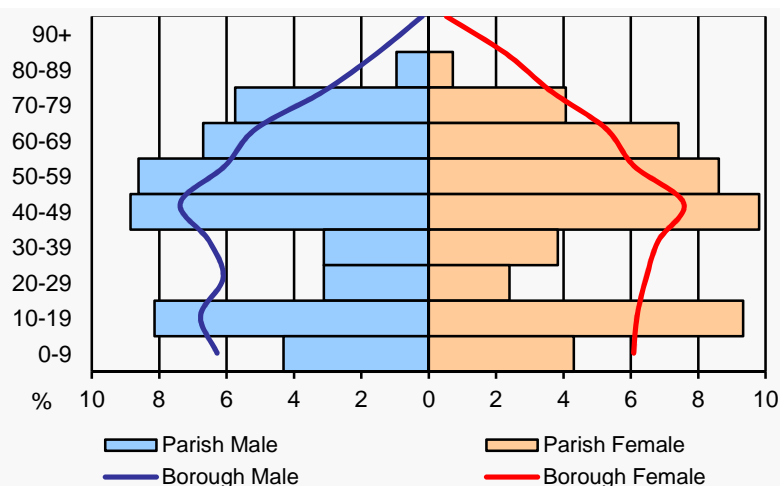
The health of residents is much better than the Borough average, with the proportion of residents having a long-term illness or disability (10%) among the lowest of all parishes.

Employment as managers, directors and in professional occupations (44%) is among the highest of all parishes. Self employment (18%) and people working from home (22%) are also both very high, and 11% work in skilled trades. The proportion of residents aged 16+ with degree-level qualifications (42%) exceeds the rural average.

Only 3% of households do not have a car, the lowest of all parishes, and 27% have 3 or more cars. Most people (66%) who are in employment travel to work by car, 4% commute by train, and 5% cycle or walk to work.

Population

Age	Parish		Borough
	No.	%	%
0-4	10	2.4	6.4
5-15	75	17.9	13.7
16-17	12	2.9	2.7
18-29	35	8.4	15.1
30-39	29	6.9	13.3
40-49	78	18.7	14.9
50-64	107	25.6	18.1
65-74	52	12.4	8.1
75-84	18	4.3	5.5
85+	2	0.5	2.2
Total	418	100	100



Ethnicity	Parish		Borough	Parish (%)
	No.	%	%	
White British	383	91.6	71.5	91.6
White Other	23	5.5	9.1	5.5
Mixed/Multiple	11	2.6	3.4	2.6
Asian/Asian British	1	0.2	11.4	0.2
Black/Black British	0	0.0	3.9	0.0
Other	0	0.0	0.7	0.0

Top 3 Countries of Birth in the Parish (excl. UK)	Parish		Top 3 Main Languages in the Parish (excl. English)	Parish	
	No.	%		No.	%
United States	11	2.6	Hungarian	2	0.5
South America	4	1.0	None	0	0.0
South Africa	2	0.5	None	0	0.0

Religion or Belief	Parish		Borough	Parish (%)
	No.	%	%	
Christian	293	70.1	59.3	70.1
Other Religion	1	0.2	10.5	0.2
No Religion	82	19.6	23.6	19.6
Not Stated	42	10.0	6.6	10.0

Marital & Civil Partnership Status 16+	Parish		Borough	Parish (%)
	No.	%	%	
Single	67	20.1	31.9	20.1
Married	198	59.5	49.2	59.5
Civil Partnership	0	0.0	0.2	0.0
Separated/Divorced	51	15.3	12.0	15.3
Widowed	17	5.1	6.7	5.1

Housing & Households

Household Composition	Parish		Borough	Household Composition	Parish		Borough
	No.	%	%		No.	%	%
1 Person: Pensioner	14	8.9	11.9	Lone Parent: With DC	12	7.6	7.6
1 Person: Other	14	8.9	16.9	Lone Parent: No DC	1	0.6	3.4
Couple: With DC	39	24.8	20.9	Couple: Both 65+	16	10.2	8.2
Couple: No DC	50	31.8	23.5	Other	11	7.0	7.5
				All Households	157	100	100

DC (Dependent Children) = Aged 0-15 and/or aged 16-18 if in full time education

Accommodation Type	Parish		Borough	Parish (%)
	No.	%	%	
Detached	111	66.5	27.4	66.5
Semi-Detached	36	21.6	32.2	21.6
Terrace	19	11.4	21.9	11.4
Flat	1	0.6	17.6	0.6
Caravan/Mobile	0	0.0	0.9	0.0

Household Tenure	Parish		Borough	Parish (%)
	No.	%	%	
Owned	122	77.7	66.8	77.7
Social Rented	9	5.7	16.1	5.7
Private Rented	26	16.6	17.2	16.6

Central Heating	Parish		Borough	Parish (%)
	No.	%	%	
None	5	3.2	2.0	3.2
Gas	16	10.2	77.2	10.2
Electric	8	5.1	9.5	5.1
Oil	109	69.4	5.1	69.4
Solid Fuel	7	4.5	0.6	4.5
2+ Types/Other	12	7.6	5.6	7.6

Health

General Health	Parish		Borough	Disability & Unpaid Carers	Parish		Borough
	No.	%	%		No.	%	%
Very Good	250	59.8	46.9	Long Term Illness/Disability			
Good	124	29.7	36.0	Limited a Lot*	15	3.6	7.1
Fair	39	9.3	12.6	Limited a Little*	25	6.0	8.9
Bad	5	1.2	3.6	Unpaid Carers			
Very Bad	0	0.0	1.0	1-49 hours per week	36	8.6	8.2
				50+ hours per week	7	1.7	2.0

* = Day-to-day activities

Economic Activity

Economic Activity (16-74)	Parish		Borough	Economic Activity (16-74)	Parish		Borough
	No.	%	%		No.	%	%
Active	212	67.7	71.9	Inactive	101	32.3	28.1
FT Employee	104	33.2	40.4	Retired	54	17.3	12.8
PT Employee	39	12.5	13.9	Student	16	5.1	5.5
Self-Employed	55	17.6	9.5	Looking After Home	21	6.7	4.3
Unemployed	7	2.2	4.4	Sick/Disabled	4	1.3	3.3
Full-Time Student	7	2.2	3.6	Other	6	1.9	2.3

Occupation (16-74)	Parish		Borough
	No.	%	%
Managers, Directors & Senior Officials, Professional Occupations	88	43.6	29.0
Associate Professional & Technical Occupations	25	12.4	12.3
Skilled Trades	23	11.4	11.0
Administrative & Secretarial Occupations	24	11.9	11.2
Caring, Leisure & Other Services, Sales & Customer Service	17	8.4	17.2
Process, Plant & Machine Operatives, Elementary Occupations	25	12.4	19.3

Highest Level Qualification

Highest Level Qualification (16+)	Parish		Borough
	No.	%	%
Level 4+ (Degree)	141	42.3	28.1
Level 3 (A Level)	33	9.9	11.8
Apprenticeship	17	5.1	3.9
Level 1 or 2 (GCSE)	86	25.8	29.0
Other	10	3.0	6.8
No Qualifications	46	13.8	20.4

Car Ownership

Cars/Vans in Household	Parish		Borough
	No.	%	%
No Cars	4	2.5	20.6
1 Car	43	27.4	41.8
2 Cars	68	43.3	28.3
3 Cars	31	19.7	6.8
4+ Cars	11	7.0	2.6
Total Cars in Parish	324	-	-

Travel to Work

Method of Travel to Work (16-74)	Parish		Borough	Parish (%)
	No.	%	%	
Work At/From Home	44	21.8	5.6	21.8
Train	9	4.5	4.9	4.5
Bus/Coach/Taxi	3	1.5	4.7	1.5
Car/Motorcycle	133	65.8	69.8	65.8
Bicycle	1	0.5	3.8	0.5
Foot	9	4.5	10.6	4.5

Sources: ONS 2011 Census Tables: QS601 Economic Activity; QS606 Occupation; QS501 Highest Level of Qualification Gained; QS416 Car or Van Availability; QS701 Method of Travel to Work. ©Crown Copyright 2013.

Notes: This profile is based upon 2011 Census data from the Office for National Statistics. © Crown Copyright 2013. ONS has swapped some records to ensure that no details of any individual or household are revealed. This may affect the accuracy of the data, particularly small numbers.

Compiled by: Community Intelligence Team, Corporate Policy, Bedford Borough Council.
Contact: intelligence@bedford.gov.uk
www.bedford.gov.uk/intelligence
Tel: (01234) 228079