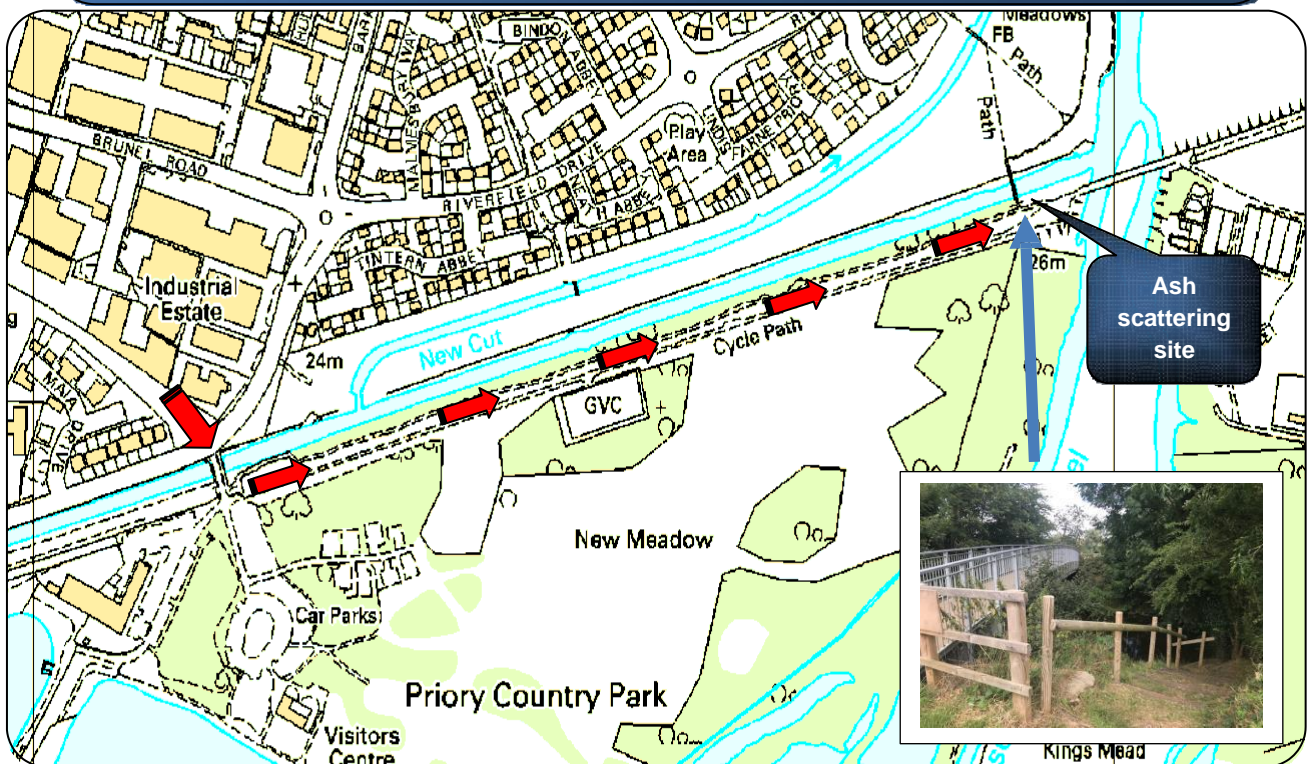


## Funeral Ash Scattering Guidelines

Faith groups and individuals follow different traditions and practices when a loved one dies. These guidelines have been produced to help the local faith groups and individuals who wish to scatter ashes in Bedford. It follows our national policy on preventing any harm to the environment as a result of funeral practices.

We have identified a suitable site in Bedford for scattering ash in flowing waters. It is next to the footbridge on the 'New Cut' section of the River Great Ouse adjacent to Barker's Lane (National Grid Reference TL 07907 49696) - first left from the Priory Country Park entrance adjacent to the recycling banks. There is free parking available near the footbridge.



- Ashes themselves have little impact on water quality; other items should not be placed in the water with the ashes.
- Personal items and wreaths might contain plastic and metal parts, which can cause litter and harm wildlife. They must not be put into the water or left on the riverbank where they could be washed into the water.

You do not require any prior approval. However it is advised to inform the Priory Country Park Office on 01234 718012 (answerphone). Please leave your contact details and the planned date of scattering. If you need any further details about ash scattering guidelines or anyone needs information in Punjabi, Hindi or Urdu please email (Brampton Land & Water) at: [Brampton\\_LW@environment-agency.gov.uk](mailto:Brampton_LW@environment-agency.gov.uk)