



# You Said We Did Autumn Update Briefing

19<sup>th</sup> November 2025

### **Confidentiality clause**

**This document contains confidential information and is intended only for the recipient(s) to which it is given.**

Except in circumstances where disclosure is required by law or by any regulatory authority, it is strictly forbidden to share any part of this document with any third party, without the written consent of EWR Co.

# Background

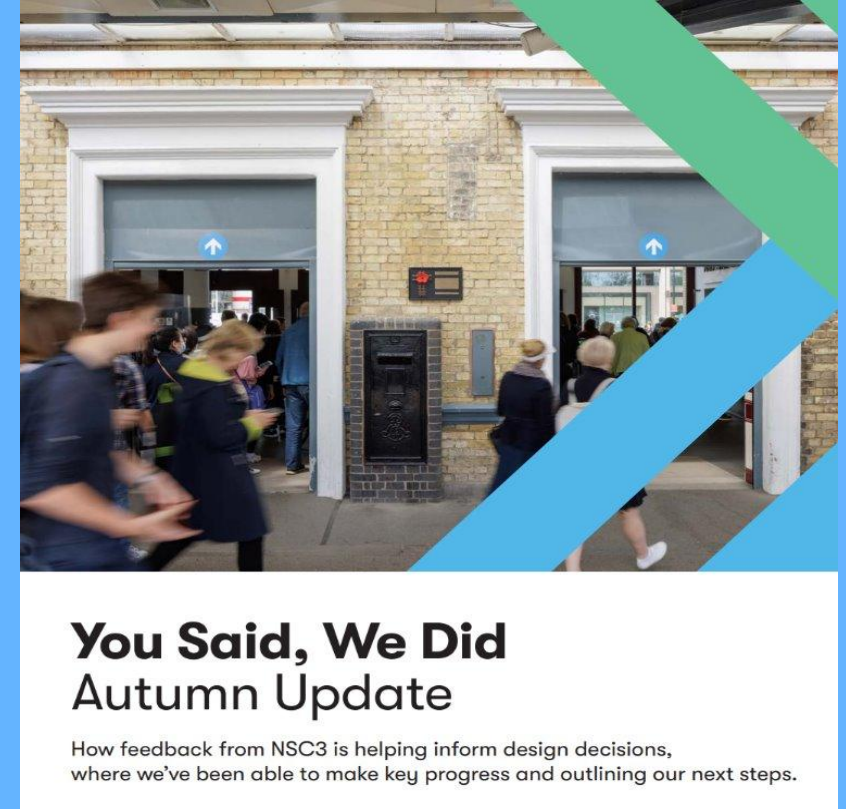
Between 14 November 2024 and 24 January 2025, we carried out our third non-statutory consultation (NSC3) offering local communities, landowners, and other stakeholders the opportunity to help shape our proposals.

The consultation shared emerging plans and gathered feedback on our design proposals and options. We provided an overview of how the consultation was delivered and some emerging findings in our **2024 Non-Statutory Consultation Update**, published in May 2025.

In total, we received 6,218 responses in NSC3 which included feedback on route-wide matters as well as specific proposals in local areas.

# You Said We Did Autumn Update

- Today we launched our You Said We Did Autumn Update Report which can be found [here](#).
- This report sets out how feedback from NSC3 is helping inform design, the progress we've made since our last consultation and our next steps.
- We have also published a supporting consultation feedback summary which can be found [here](#).





# 10 KEY UPDATES SHAPED BY COMMUNITY FEEDBACK

**east  
west  
RAIL**

Find the complete You Said, We Did report at [eastwestrail.co.uk/you-said-we-did](https://eastwestrail.co.uk/you-said-we-did)

## 1 Bicester London Road Level Crossing

**You said:** Original options didn't meet Bicester's needs, especially for vehicles.

**We did:** Considering a single-lane underpass for vehicles and a corridor for pedestrians/cyclists.



## 2 Bletchley Station

**You said:** Improve accessibility and integration with the town.

**We did:** We've updated designs to include an eastern entrance (subject to funding) to support regeneration and reduce walking distances.

## 3 Stewartby Station and Universal Studios

**You said:** Option 1 was preferred for proximity; Option 2 better suited future development.

**We did:** Selected Option 2 near Broadmead Road to support Universal and wider community needs.



## 4 Bedford St Johns

**You said:** Support for relocation near the hospital, but concerns about access and car park impact.

**We did:** Confirmed relocation with improved links, EV parking, and designs to minimise disruption.

## 5 Tempsford Alignment

**You said:** Strong preference for Alignment 1c due to lower impact and cost.

**We did:** Selected 1c, enabling earlier station delivery and better operational efficiency.



## 6 ECML Logistics Hub

**You said:** Support for rail hub, with Option B preferred for flexibility and alignment.

**We did:** Chose Option B, refined design to reduce impacts and improve access.

## 7 Cambourne Station

**You said:** Support for station but concerns about distance from town centre.

**We did:** Moved station 700m west for better access, avoiding green space and aligning with local plans.

## 8 Bourn Airfield

**You said:** Opposed cut-and-cover tunnel due to environmental and development concerns; preferred a mined tunnel.



**We did:** Switched to a mined tunnel to reduce disruption, reuse materials, and protect the environment. Design and assessments are underway.

## 9 Cambridge Station

**You said:** People supported station improvements and suggested an eastern entrance to better connect with Clifton Road.

**We did:** We're considering a new eastern entrance with step-free access, active travel links and passenger facilities. This will improve connectivity, support local needs, and align with the revised Cambridge City Plan.

## 10 Cambridge East

**You said:** Strong interest in a new station east of Cambridge to improve access and support growth.

**We did:** Started exploring a Cambridge East station near Coldham's Lane, with active travel links and regional connectivity, subject to funding.

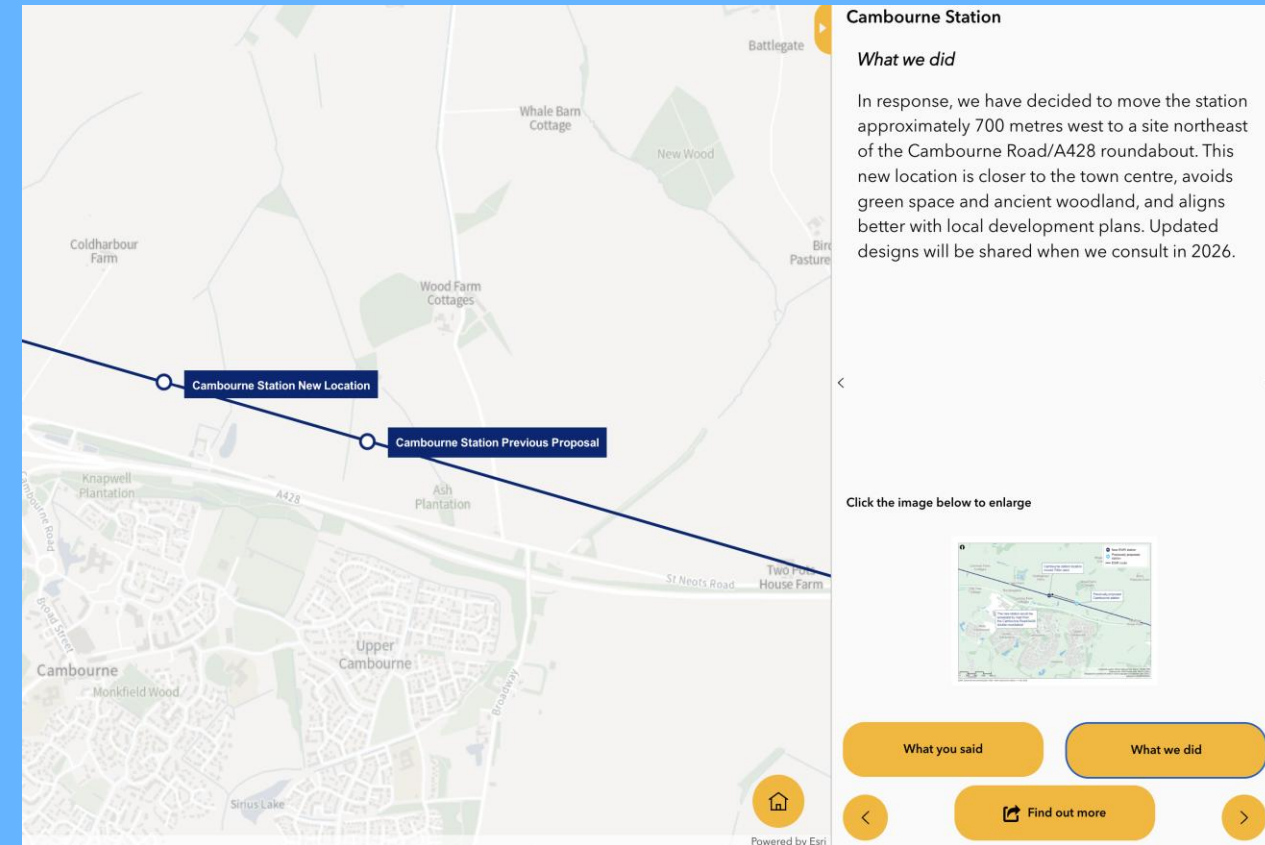




# YSWD Autumn Update – key proposal updates

- Expanding our capacity
- Oxford area improvements
- London Road level crossing, Bicester
- Bletchley station
- Marston Vale Line (MVL) stations and train services
- Ridgmont station
- Stewartby station
- Bow Brickhill level crossing
- Bedford St John station
- Bedford station
- Tempsford alignment and station
- Acceleration of Tempsford station
- East Coast Main Line rail logistics hub
- Cambourne station
- A428 Bourn Airfield crossing
- Newton to Harston connectivity and Newton footbridge
- Cambridge station
- Cambridge East station

# You Said We Did Autumn Update Interactive Map



# Safeguarding

- The Secretary of State has updated the Safeguarding Directions so that the safeguarded area aligns with our latest proposals outlined in the You Said, We Did Autumn Update and following landowner engagement.
- The updated Safeguarding Directions are being issued to LPAs along the route. As a result, LPAs will need to consult us regarding any planning applications falling within the updated safeguarded area.
- We have written to all landowners affected by updates to the safeguarded area.
- Eligible landowners within the safeguarded area may serve a blight notice asking us to buy their land ahead of construction.
- The updated safeguarding directions and associated documents will be available at <https://eastwestrail.co.uk/planning/land-and-property/safeguarding>



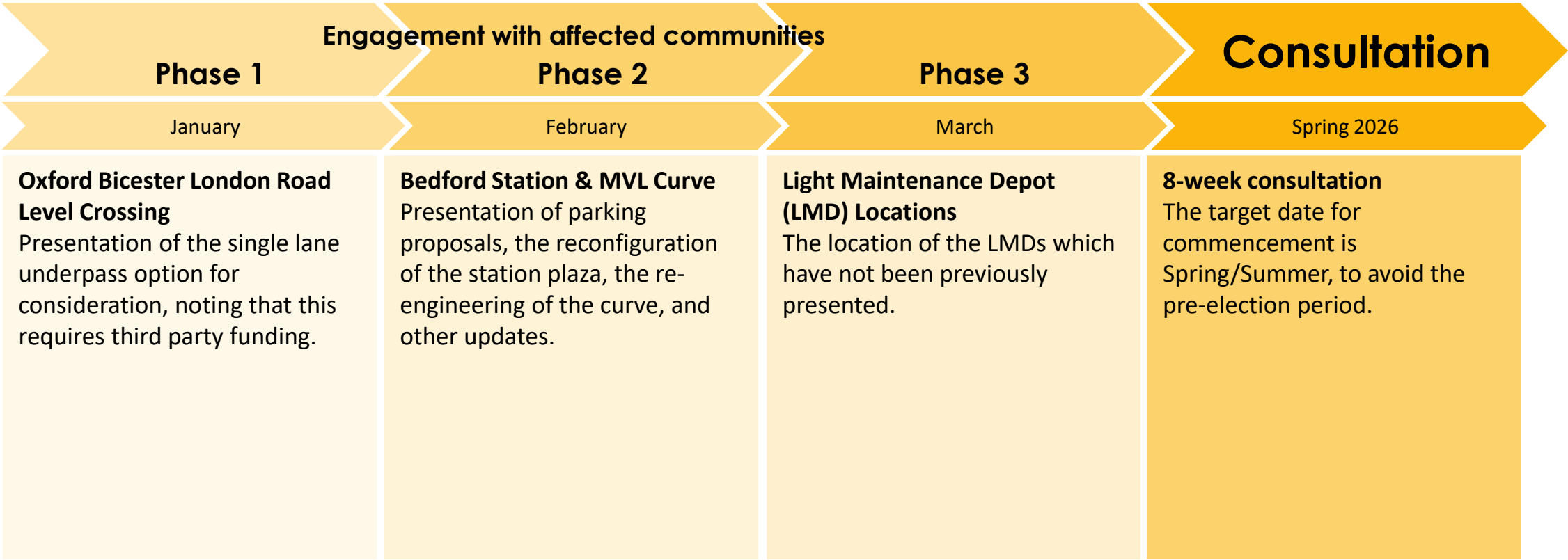
# Next Steps

# Ongoing engagement, Design Update Sessions and a future consultation

- We're continuing to develop our designs for EWR in discussion with statutory stakeholders, including LAs, environmental bodies and utility companies as we carry out more environmental and engineering technical assessments and survey work
- We're continuing to use the feedback from NSC3 to refine our design proposals for the areas where we've not confirmed decisions within the YSWD Autumn Report
- We will undertake a series of Design Update Sessions in a number of route sections prior to consultation next year (more details in next slide)
- We will carry out a consultation next year to present our proposals along the route and confirm our plans for those areas where we're currently still developing our designs and decisions have not yet been taken

# Looking ahead to future DCO engagement

## Consultation events and Public communications: Timeline for 2026



For engagement, information will focus on the plan drawings; there will be no ‘polished’ material as one would typically see at a consultation. The intention will be to talk specifically to the design and the environmental mitigation as shown on the drawings.

# Q&A

# Route section main contacts

## OXFORD

**Stakeholder Area Lead:** Michael Flynn  
**Area Manager:** Renju Chacko

## MARSTON VALE LINE

**Stakeholder Area Lead:** Sunisha Tharappan  
**Area Manager:** Ryan Robertson

## BEDFORD

**Stakeholder Area Lead:** Richard Starkey  
**Area Manager:** Mo Alserdare

## CORE

**Stakeholder Area Lead:** Ben Savona  
**Area Manager:** Stephen Christian/Olu Solola

## CAMBRIDGE

**Stakeholder Area Lead:** Ellen Dennison  
**Area Manager:** Jon Cornwell

**east**  
**west**  
RAIL

Route-wide  
Environmental  
stakeholder  
engagement:  
Andy Mayes





# Thank you

[www.eastwestrail.co.uk](http://www.eastwestrail.co.uk)