

BEDFORD RIVER FESTIVAL

18TH & 19TH JULY 2026

IN ASSOCIATION WITH



GALLAGHER
DEVELOPMENTS



EVENT PROGRAMME

www.bedford.gov.uk/riverfestival

events@bedford.gov.uk

Follow our official social media accounts for up-to-date information...

[@BedfordEvents](https://www.facebook.com/BedfordEvents)

[@bedfordevents](https://www.instagram.com/bedfordevents)

[@BedfordEventsUK](https://twitter.com/BedfordEventsUK)



Contents



Interactive Contents
Click on a heading to view the page

Welcome to the 2026 Bedford River Festival!	3
River Activities: Main River	5
Russell Park	7
St. Mary's Gardens: Family Island	9
Mill Meadows	13
River Activities: Water Sports Arena	17
Green Earth Village	18
Sports Island	20
The Embankment	24
Bedford High Street	26
Bedford Festival of Motoring	26
Forever Our Harbour Master	28
Food & Drink	29
Getting to the Event	33
Sponsors & Partners	36
Finding out more...	38



Welcome to the 2026 Bedford River Festival!



How can anyone capture the spirit of the River Festival in just a few words? I know so many of you will be thrilled to have the return of one of the highlights of our calendar, a vibrant two-day celebration that truly showcases our town and borough.

As ever, the festival blends exciting new attractions with much-loved favourites. I'm certain that, like me, you'll come across something new this year, even among familiar features, because there is simply so much to see and enjoy.

We're especially pleased to continue to offer families with young children the family area in St. Mary's Gardens which will host a full programme of activities and workshops across both days. We're also delighted to welcome back our Special Educational Needs and Disabilities (SEND) team, following their successful involvement in 2024.

In Harpur Square, the Bedford Music Hub Stage will bring together organisations including the BBC, schools, arts groups, and community partners to deliver a rich and collaborative music programme. This partnership highlights the festival's long-standing commitment to providing a platform for local children and young people to share their talents.

Along the Embankment, the new BBC Music Introducing Stage will showcase emerging artists from Bedford and the surrounding area—many of whom could be tomorrow's headline acts.

Over the Butterfly Bridge, the Sports Island provides a unique opportunity to try a wide range of sports and activities offered by local organisations in a relaxed and welcoming environment. With a strong village ethos that celebrates fun, participation, and staying active, the weekend showcases lively dance and exercise performances on stage alongside hands on activities such as climbing, canoeing, kayaking, stand up paddleboarding, rugby skills, gymnastics, golf, and squash.

On Saturday, we're delighted to once again team up with Sue Ryder to bring back the ever-popular dragon boat experience, giving you even more ways to take part while supporting a wonderful cause. Then on Sunday, be sure to catch the raft race, where teams will battle it out on homemade boats along the river, from St. Mary's Gardens to the Suspension Bridge.

At Mill Meadows, a dedicated arts area will showcase local talent through an inspiring mix of displays, performances, installations, and hands-on workshops.

Across the festival, you'll find a wide range of free activities and entertainment, from live music, bushcraft demonstrations to a petting farm, the Festival of Motoring, river displays, arts exhibitions, interactive stalls, and multiple performance stages, just to name a few.

And best of all, the entire weekend is free to attend.

My sincere thanks go to the dedicated team at Bedford Borough Council, whose hard work makes this event and so many others throughout the year, possible. It's wonderful to see the range of new, free activities they've introduced for families to enjoy. I would also like to thank our sponsors and partners, whose support is essential in helping us deliver an event that continues to put Bedford on the map.

We truly believe this year's River Festival offers something for everyone, and I hope you'll join us on July 18 and 19 for what promises to be the best festival yet.

Enjoy the weekend!



Tom Wootton
Elected Mayor and Leader of Bedford Borough Council

GALLAGHER

DEVELOPMENTS

ARE SEEKING **NEW** OPPORTUNITIES

Over **60 years** experience in the field.

Our team has delivered over **150,000 homes** and
10 million square feet of
Commercial and Retail Property.

We are looking to acquire land with development
potential nationwide.

We have the ability and funding to act quickly and
confidentially.

Whether you are seeking an outright sale of your
land at a premium, or seeking a partner to take
your land through the planning process,
we want to hear from you.

For all enquiries, please contact our Warwick office on **01926 699699**

Or e-mail: **mail@gallagherdevelopments.com**

River Activities: Main River

The soul of the River Festival is the huge range of entertainment and activities taking place that truly bring the River Great Ouse to life and commemorate the opening of the river from Bedford to The Wash in Norfolk in 1978. Whether you want to see the traditional boat parades, the dragon boat & raft races, or the daring stunts in the Water Sports arena, there is plenty to keep the family entertained right across the festival weekend. These activities take place along the entire length of the festival site, from St. Mary's Gardens to the Sports Island, so there will always be something to see on the water wherever you are.

The cruiser and narrowboat enthusiasts who attend provide the centrepiece to the weekend's celebrations, with many taking part in the Grand Parade of Cabin Cruisers and Grand Parade of Narrowboats which take place on both Saturday and Sunday. The Saturday night finale will be the fantastic Illuminated Boat Parade.

Working with [Sue Ryder](#), the Dragon Boat Races take place on Saturday 18th July and the Raft Races, organised by the [Rotary Club of Bedford Park](#) and sponsored by [Fuji Film](#), take place on Sunday 19th July. This year the raft crews will be raising money to support local charities and projects in Bedford – be sure to cheer them on as they compete!



Saturday 18th July 2026: Main River

Activity

Grand Parade of Cabin Cruisers

Grand Parade of Narrow Boats

Illuminated Boat Parade

River Activities: Main River *continued*

Sunday 19th July 2026: Main River

Activity

Stand Up Paddleboard Race

Grand Parade of Cabin Cruisers

Grand Parade of Narrow Boats

Raft Race Heat 1

Raft Race Heat 2

Raft Race Final



Saturday 18th July 2026: St. Mary's Gardens

Activity

Dragonboat Race Heats

Dragonboat Race - Semi Final 1

Dragonboat Race - Semi Final 2

Dragonboat Race - Final

Sunday 19th July 2026: St. Mary's Gardens

Activity

Raft Preparation sponsored by Fuji Film

Rafts proceed to Start Line (opposite Castle Mound)

Rafts return

Russell Park



Main Stage sponsored by **The Harpur Centre**

Russell Park features the River Festival's Main Stage, sponsored by [The Harpur Centre](#), which will bring you top performances from a wide range of bands and musicians throughout the weekend. If having a dance and soaking up the festival atmosphere appeals to you, then Russell Park is the place to be.

The ever-popular craft & gift marquee will now be found in Russell Park bringing in unique sellers from across the country.

At the back of Russell Park you will also find a large picnic area, crazy golf course and the amazing play area which includes a section where all equipment is inclusive. The crazy golf and play area are open all year round, not just at the festival.

There is also entertainment for the kids, including giant inflatable slides and fairground rides.

The main stage content has been selected by our partners at The Pad Presents and the local live music venue Esquires.





HARPUR CENTRE

PROUD SPONSORS OF THE RIVER FESTIVAL

YOURS

Boots

PANDORA™

PUTT PUTT NOODLE

Specsavers

TESCO



PRIMARK

GREGGS

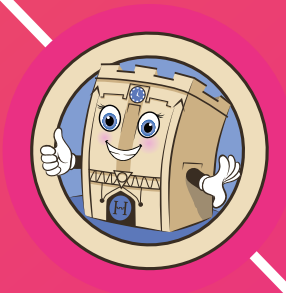
énergie Fitness
where you belong.

HARPURCENTRE.CO.UK   

BEDFORD'S PREMIER SHOPPING CENTRE

AN INCREDIBLE LINE UP OF BIG BRANDS AND INDEPENDENT STORES.

FREE WI-FI THROUGHOUT THE HARPUR CENTRE. AWARD WINNING TOILET FACILITIES, FREE PARKING ON SUNDAYS.



St. Mary's Gardens: Family Island

Sponsored by **Bedford College**



The River Festival site expanded into St. Mary's Gardens in 2018 to create a chill-out zone perfect for those seeking a quieter side to the festival. In 2026 this area is kindly sponsored by [Bedford College](#) and it will be bursting with family friendly activities. The Family Island, which is aimed at tots to teenagers, will boast a packed programme of children's workshops from dance, storytelling, sensory activities, arts, crafts, fun science and interactive shows brought to you by some fantastic children's entertainers and practitioners. Aimed at tots to teenagers, we can't wait to bring some exciting entertainment and create lasting memories this summer!

Workshops are free to attend, but spaces on some of the workshops will be limited, so you will need to arrive early to secure a place. If you happen to miss out, don't worry, children will be surrounded by free entertainment in this area of the site, such as the Little City Role Play Village throughout the weekend and a petting zoo.

SEND Family section will also be on family Island. This "Inclusive Island" will be cordoned off and will have a shaded area with sensory equipment as well as a dedicated bouncy castle for children and young people with Special Educational Needs and/or a Disability (SEND). The area will be manned by staff from various services that support children and young people with SEND and their families. Staff will be on hand to answer any questions you may have or to share information about events, clubs and activities that may be suitable for you or your family. There will also be a mobile changing place toilet available at the site and it is close to plenty of disabled parking. There will also be stalls from the NHS and other family-friendly activities.

The ever popular Adventure Village will also make a triumphant return, with local activity providers [Canoe Trail](#) putting on an array of exciting problem solving, outdoor adventurous activities. This will include bushcraft demonstrations, axe throwing and a climbing wall amongst other things.

St. Mary's Gardens is also the best place to watch the Dragonboat Races from!

On the other side of the river, Riverside Square will feature a static display of unique vehicles presented by the Festival of Motoring.



St. Mary's Gardens: Family Island *continued*

Sponsored by **Bedford College**



Saturday 18th July 2026: Activity Tent

Company	Activity
Little Science Lab	Become a little scientist with hands-on dry ice experiments!
Little Science Lab	Become a rocket designer and send your creations into orbit using an air pressure cylinder!
Drama Geezers	Join The Drama Geezers for a lively, interactive Family Story Telling experience where children create their own tale through imaginative play. Together, they'll build a world full of fun, surprises, and wild adventures, then bring it to life with drawings on giant paper.
Kaye Leidoskope	Create and decorate your own unique summer crown to wear out into the River Festival. A joyful, hands-on session full of colour, creativity, and sunshine vibes, using earth-friendly materials, run by local creative arts practitioner, Kaye Leidoskope.

Company	Activity
Kaye Leidoskope	Create and decorate your own unique summer crown to wear out into the River Festival. A joyful, hands-on session full of colour, creativity, and sunshine vibes, using earth-friendly materials, run by local creative arts practitioner, Kaye Leidoskope.
Little Science Lab	Become a little scientist with hands-on dry ice experiments!
Little Science Lab	Become a rocket designer and send your creations into orbit using an air pressure cylinder!
Little Science Lab	Become a little scientist with hands-on dry ice experiments!
Imajica Theatre	Immersive and interactive musical storytelling shows and sensory experiences with sign language.
Imajica Theatre	Immersive and interactive musical storytelling shows and sensory experiences with sign language.

Also available throughout Saturday and Sunday

Petting Zoo with Animal Edge

Suitable for 2-8 years old but everyone is welcome.

A welcoming petting zoo with a pony to groom, goats to feed, and rabbits, chickens, and guinea pigs to stroke, all supported by experienced staff.

Role Play Village with Little City

Suitable for ages 6 years up.

At Little City your little ones can 'be' grown ups: where nothing is off limits, they can be the hairdresser, the firefighter, the builder, the café owner and much, much more.

Utilising their bespoke backdrops and specially selected high-quality toys and equipment, your child can fully immerse themselves in their own world and welcome you in too!

Circus Skills with Covent Garden Circus Skills

Suitable for ages 5-11.

Tabatha Ladbrook-Hutt is a former Covent Garden Street Performer with over 25 years experience in the performance and entertainment industry.

She invites all the family to try their hand at a variety of circus skills and have lots of fun along the way!



ROLE PLAY FUN FOR EVERYONE!

A Little City crafted for little people up to 6 years old.



Pay as you go sessions

Sessions available in your area.
Find your city on our website and book your play session today!



Parties and events

Hire your very own Little City and become mayor for the day!
The perfect way to entertain little friends.





Schools and nurseries

Learning through play is what we're all about!
We're here to support EYFS and Early Learning goals.



Come and explore our Little City in St Mary's Gardens during the River Festival Weekend.

www.littlecityuk.com  



DISCOVER HUNDREDS OF
ADULT PART-TIME COURSES >



IT'S NEVER TOO LATE TO LEARN

LOOKING TO BOOST YOUR CAREER, LEARN
SOMETHING NEW, OR TAKE TIME FOR YOURSELF?

**Our part-time courses are designed to fit around your life
with flexible day, evening and weekend classes.**

Whether you want to progress in your current job, change career, gain
new industry-recognised qualifications or explore a new hobby - we
have a course for you!

**Choose from a wide range of
subjects, including:**

- Art & Design
- Accounting & Business
- Computing & IT
- Construction & Engineering
- Counselling
- Distance Learning
- English & maths (GCSEs & Functional Skills)
- ESOL
- Green Skills
- Floristry
- Land-Based (Horticulture & RHS)
- Motor Vehicle
- Plumbing & Gas
- Electrical Installation
- Teacher Education
- Skills Bootcamps



[CLICK HERE TO FIND OUT MORE](#)

bedfordcollegegroup.ac.uk

Mill Meadows



Sponsored by **The Harpur Trust**

Mill Meadows is a hub of activity during the River Festival, with trade stalls galore and the ever-popular Community Stages showcasing fantastic performances from the community of Bedfordshire. The Community Stage is kindly sponsored by [The Harpur Trust](#).

Mill Meadows will feature an Arts & Culture area showcasing some of the fantastic local creativity. It will be a creative haven for you to enjoy and participate in a range of activities delivered by local cultural organisations and practitioners. Across both days will be a range of activities across a variety of artforms including music, dance, storytelling, poetry, visual art and crafts. Delivered collaboratively by the Bedford Cultural Partnership.

Come and explore a range of free art, performance and cultural activities at the Arts & Culture Island. Meet local arts organisations from the Bedford Cultural Partnership including Ananda Arts, Bedford Creative Arts, Heritage Bedford, Bedford Libraries, The Quarry & BedFringe and many more to find out more about what's on throughout the year, try free creative activities, and watch live dance and music performances.

This area is especially family friendly with space to participate or just watch the many talents of some of Bedford's creative community.

Mill Meadows also hosts viewing areas for the river and a vast array of trade and promotional stalls, alongside some giant inflatables and water activities.



Mill Meadows *continued*



Sponsored by **The Harpur Trust**

Saturday 18th July 2026: Community Stage

Performer
Olivia Lynn
Bedford Pipe Band
DJ Danny Matcham
Ragged Staff
Inspire Performing Arts
Uprising
Stagecoach Performing Arts Bedford
The Black and Gold
Rohan Regmi
PVE
Cameo
Devils Mojo
Bedford Youth Community Gospel Choir
Donna Samuels
Murmuration Dance
Bhangra Smash Up
WondRWomN
Carbon Daydreams
Dave Bergin presents GoodTimes - 'Back to the 90s'
Frenzy

Sunday 19th July 2026: Community Stage

Performer
Buskerteers Choir Bedford
Robbie Herrick
Swingsters
Simit Maroon
Bedford College
Fight Klub DnB Workout
Piano Bruce
Capricorn Performing Arts
Fe Salomon
Brassbound
The Krakens

HARPUR TRUST

Together for Bedford

Here for everyone in Bedford - every child, every family, every community, every generation



We are proud sponsors of the Community Stage - last year we provided £4 million in grants for community groups, programmes for young people and bursaries in our network of quality schools



Join us in shaping a brighter future for everyone in Bedford & find out more about our impact

www.harpurtrust.org.uk



BEDFORD
BOROUGH COUNCIL

Sundays from 3pm to 5pm
Mill Meadows Bandstand
The Embankment, Bedford

Music *in the* Meadows

The Summer Bandstand Concerts return to the Embankment Bandstand this August.

Come along, bring the family & a picnic and enjoy two hours of traditional bandstand music...

2 nd August 2026	Bedford Town Band
9 th August 2026	May Blossom Vintage Songbird
16 th August 2026	Fynnious Fogg (2pm to 5pm)
23 rd August 2026	South Beds Concert Band



Bands on the Bridge at the Bedford River Festival

If you enjoy the Music in the Meadows Concerts, then join us on Town Bridge on Saturday 18th & Sunday 19th July...

Saturday 18 th July 2026	11:00am to 12:30pm	Luton Concert Band
	1:30pm to 3:00pm	Mainline Big Band
	4:00pm to 5:30pm	Ukulele Bedford
	6:30pm to 8:00pm	Bedford Town Band
Sunday 19 th July 2026	11:00am to 12:30pm	Bedford Town Concert Brass
	1:30pm to 3:00pm	Sax's Cool
	4:00pm to 5:30pm	The Also-Rans



@ events@bedford.gov.uk
www.bedford.gov.uk

x.com/BedfordEventsUK
@BedfordEvents @Bedford Events

River Activities: Water Sports Arena



Coordinated by [Canoe Trail](#)

Water Sports Arena Brings High-Energy Action to Bedford River Festival Weekend!

Visitors to this year's Bedford River Festival can expect a splash of excitement as the Water Sports Arena returns for two action-packed days on both Saturday and Sunday. Perfectly positioned next to the Butterfly Bridge and the Rowing Club, the arena will transform the river into a hub of thrilling demonstrations and hands-on water activities for all ages.

Coordinated by [Canoe Trail](#), the Water Sports Arena brings together expert instructors and passionate paddlers to deliver a safe, engaging, and memorable experience for festivalgoers of all abilities.

A major highlight of the weekend will be the impressive large ramp installation, where skilled paddlers will perform spectacular canoe flips and freestyle tricks, showcasing agility, balance, and precision on the water.

Festivalgoers won't just be watching from the sidelines — the Water Sports Arena offers a range of “come and try it” sessions, giving attendees the chance to get out on the water themselves. Activities include Stand Up Paddleboarding, Canoeing, and Kayaking, with experienced instructors on hand to guide beginners and build confidence.

For those looking for something a little more adventurous, the arena will also host zorbing sessions and lively water obstacle races, promising fun, laughter, and a bit of friendly competition throughout the weekend.

On Sunday, the excitement continues with a fast-paced Canoe Polo match, where teams will battle it out in a thrilling display of skill, teamwork, and strategy on the water.

Whether you're an experienced paddler or a curious first-timer, the Water Sports Arena offers something for everyone — making it a must-visit destination at this year's Bedford River Festival.



Green Earth Village



Produced by **Green Earth Café**

Green Earth Vegan Lounge Situated on Castle Mound, the Green Earth Vegan Lounge offers a vibrant mix of vegan food, drinks, and ethical products, alongside live demonstrations of willow weaving and wood turning. Families can enjoy nature-inspired children's activities hosted by the Forest of Marston Vale.

Music throughout the event will be provided by Remedy Collective, a Bedford-based group showcasing talented acts from across the UK. Visitors can also relax in dedicated chill-out spaces and explore the Wellbeing Tent, hosted by Bedford's new Wellbeing Hub making its River Festival debut. The programme includes calming and restorative sessions such as Reiki, Qigong demonstrations, and sound baths.

Castle Mound has long offered an excellent viewing spot for the various river activities taking place throughout the festival weekend, including the racing and the Illuminated Boat Parade on Saturday evening. Visitors can enjoy the catering options on offer or bring a picnic.





green Earth Cafe presents

THE GREEN EARTH VEGAN LOUNGE

FEATURING
REMEDY COLLECTIVE

At
BEDFORD RIVER FESTIVAL

and the
wellbeing hub

18 and 19
JULY 2026
at **CASTLE MOUND**



Sports Island



Sponsored by **Better - Bedford's Leisure Provider**

The Sports Island, kindly sponsored by [Better, Bedford's Leisure Provider](#), is situated beside the Butterfly Bridge—one of the main crossings over the River Ouse—welcomes thousands of visitors to take part in, watch, and explore a wide variety of sports, health, and leisure activities.

At the heart of the event is a lively programme of sporting demonstrations, interactive “come and try” sessions, and a dynamic stage packed with exercise classes, acrobatics, and dance performances. Whether you're keen to get involved or simply enjoy the spectacle, there's something for everyone.

The ethos of the Sports Island is to inspire people of all ages and abilities to have fun and stay active. If you're thinking about trying a new sport or rediscovering an old favourite, this is the perfect place to see what Bedford has to offer. Local clubs, organisations, and gyms will be on hand to provide information, advice, and opportunities to get involved.

Visitors can enjoy a diverse range of activities, including back massages, canoeing, kayaking, stand-up paddleboarding, rugby skills sessions, gymnastics, line dancing, cheerleading demonstrations, squash activities, and even a climbing wall.

Bedford Borough Council
**Active Wellbeing
& Sports Development Unit**
www.bedford.gov.uk/sport



**Stay up-to-date with email bulletins
from Bedford Borough Council**

Sign up at <https://public.govdelivery.com/accounts/UKBEDFORD/subscriber/new> or scan the QR code

Sports Island *continued*



Sponsored by **Better - Bedford's Leisure Provider**

Saturday 18th July 2026: Sports Stage

Activity

Come and try Yoga class

with Mo from Better

Mo will take you through a gentle yet effective yoga class that focuses on mindful movement, controlled breathing, and full-body awareness. Drawing from practices like Ashtanga Yoga and Yin Yoga, this session helps release tension, improve posture, and enhance flexibility. Ideal for both beginners and experienced participants.

Fundamentalz Dance Limited

DL Dance

Kinetic Vibes Dance Academy

Swingsters.co.uk

VyMy Dancing & Fitness

Mike's Line Dancing

UFM Community Dance Group

UFM Community Dance Group

FUZE Dance Company

Street Squad & Show Squad

Elements Elite

Fight Klub DnB Workout

Street Squad & Show Squad

Inspire Performance Arts

Inspire Performance Arts

Mike's Line Dancing

Sunday 19th July 2026: Sports Stage

Activity

Come and try Yoga class

with Maite from peacethruyoga

A calming and rejuvenating yoga class designed to strengthen the body and relax the mind. Through a series of flowing postures inspired by Hatha Yoga and Vinyasa Yoga, participants improve flexibility, balance, and overall well-being. The session also incorporates mindful breathing and relaxation techniques, helping to reduce stress and promote inner peace. Suitable for all levels, this class offers a supportive space to unwind and reconnect.

Come and try Fitness class

with your local fitness coaches from the Better Bedford sites

A dynamic and energizing fitness class that combines strength, cardio, and fun all in one session. It blends the muscle-toning power of BodyPump, the high-energy dance moves of Zumba, and overall fitness training to improve endurance, flexibility, and strength. Perfect for all levels, this class keeps you motivated while delivering a full-body workout.

Rise Dance Collective

VyMy Dancing & Fitness

Mike's Line Dancing

Inspire Performance Arts

Inspire Performance Arts

Swingsters.co.uk

Belle Etoile Dance

DN Dance

Elements Elite

Fight Klub DnB Workout

Mike's Line Dancing





MUSEUMS HAVE CURATORS, WE HAVE ENGINEERS

DISCOVER SHUTTLEWORTH

From our world-renowned Collection - a treasure trove of airworthy vintage aircraft from 1909-1950s, as well as historical agricultural and steam exhibits, veteran cars, classic motorcycles, bicycles, vintage buses and carriages - to our nine-acre Regency Garden, there's plenty to explore at Shuttleworth.

Stop for a bite to eat at our Runway Café as you enjoy the view of our live grass airfield, or head to the Engineering Workshop to see our in-house engineering team at work.

Make the most of our 60+ years' experience and get a real taste of the action with one of our spectacular live air shows, running throughout the summer.

Looking for an iconic venue for your next family celebration or corporate event? Shuttleworth House, an award-winning wedding and events venue, forms part of our stunning Grade II* listed estate.

FIND OUT MORE



SHUTTLEWORTH.ORG

     shuttleworthtrust



Riverside Afternoon Tea at the Mercure Bedford Centre Hotel

Take in the beautiful views of the River Great Ouse & all the Bedford River Festival has to offer whilst enjoying a sumptuous array of fresh savoury treats & delicate, sweet delights

£30.00 for 2 people

Add a glass of Prosecco for £7.00 per adult available from Midday till 3pm — we look forward to welcoming you!

Pre booking recommended, walk ins welcome, subject to availability

Contact our team to book

Call: 01234 799988 or

Email: Colin.Watts@accor.com

MERCURE
HOTEL
BEDFORD CENTRE

YOUR PLACE TO MOVE PLAY AND LEARN IN BEDFORD

Step inside your Bedford Leisure Centres and find more ways to enjoy your leisure time.

better.org.uk/bedford



Better is a registered trademark and trading name of GLL (Greenwich Leisure Limited), a charitable social enterprise and registered society under the Co-operative & Community Benefit & Societies Act 2014 registration no. 27793R. Registered office: Middlegate House, The Royal Arsenal, London, SE18 6SX. Inland Revenue Charity no: XR43398

The Embankment

sponsored by **Jewson Partnership Solutions**



Bedford's Victorian Embankment Promenade is often described as 'the jewel in Bedford's crown'.

It becomes a hive of activity during the River Festival when it becomes home to the Festival Market and a multitude of trade stalls, making it the perfect place to peruse a wide variety of both local and regional goods and maybe to pick up a unique souvenir or gift. You can also keep an eye on the various river activities taking place as you stroll along the riverside.

The Embankment is also perfect for viewing the river activities which take place throughout the duration of the Festival, including the various boat parades and thrilling water demonstrations.

New for this year will be the Bedford Music Hub Stage. Working with a number of their partner organisations (including Bedford Music Cooperative, Bedford Town Band, Luma Sounds, Musical Seeds, Philharmonia Orchestra), they will showcase a fantastic array of young local talent: singers, instrumentalists, beatboxers, rappers, DJs and aspiring rockstars.

Creating Musical Pathways - the Bedford Music Hub ensure that all children and young people across Bedford Borough have access to high-quality, inclusive and varied musical experiences and progression routes. For more information please visit the website [here](#).

BBC **introducing...** [BBC Introducing Three Counties & Northants](#) are proud to present a handpicked showcase of the region's most exciting talent.

Curated by the UK platform dedicated to discovering and supporting new music, this stage brings together a diverse lineup of emerging artists making serious waves locally and nationally.

Expect infectious country-pop from Olivia Lynn, who recently played at Country to Country Festival 2026, the atmospheric indie sounds of Spaceacre who supported Skunk Anansie's sold out show at The Great Escape in Brighton back in 2025, heartfelt songwriting from Joe Cullen, and genre-blending energy from Beattie, who will be a big hit with fans of Radiohead.

From fresh new voices to future festival headliners, BBC Introducing shines a spotlight on the artists you need to hear first. Come down, and discover your next favourite artist!





RELATIONSHIPS THAT DELIVER

PROUD TO SUPPORT THE BEDFORD RIVER FESTIVAL 2026



DELIVERING MATERIALS, SOLUTIONS & SOCIAL VALUE

- Supporting local housing & communities
- Reliable supply, when and where it's needed
- Partnerships that make a difference

Visit our website and download our brochure at www.jewsonpartnershipsolutions.com

Bedford High Street

sponsored by **Brehey Civil Engineering**



Visit Bedford High Street to not only see the wonderful businesses and hospitality options that we have all year round but also to admire the display of the Festival of Motoring.

Successfully debuting at the 2022 Bedford River Festival, the Festival of Motoring wowed the crowds with exceptional vehicles of all ages and types. These will be found not only on the High Street, but also on St. Paul's Square, Riverside Square and on Harpur Square. Remember if you want to see these vehicles in motion then the Festival of Motoring will depart the site at 5pm both days.

Town Bridge is known for being an ideal location to view the river activities, and the bridge will also host traditional bands performing in our 'Bands on the Bridge' area. Pull up a chair and relax to some rousing classical tunes performed by some of the best bands in Bedfordshire.

Saturday 18 th July 2026: Bands on the Bridge
Activity
Luton Concert Band
Mainline Big Band
Ukulele Bedford
Bedford Town Band

Sunday 19 th July 2026: Bands on the Bridge
Activity
Bedford Town Concert Brass
Sax's Cool
The Also-Rans

Bedford Festival of Motoring

sponsored by **Brehey Civil Engineering**



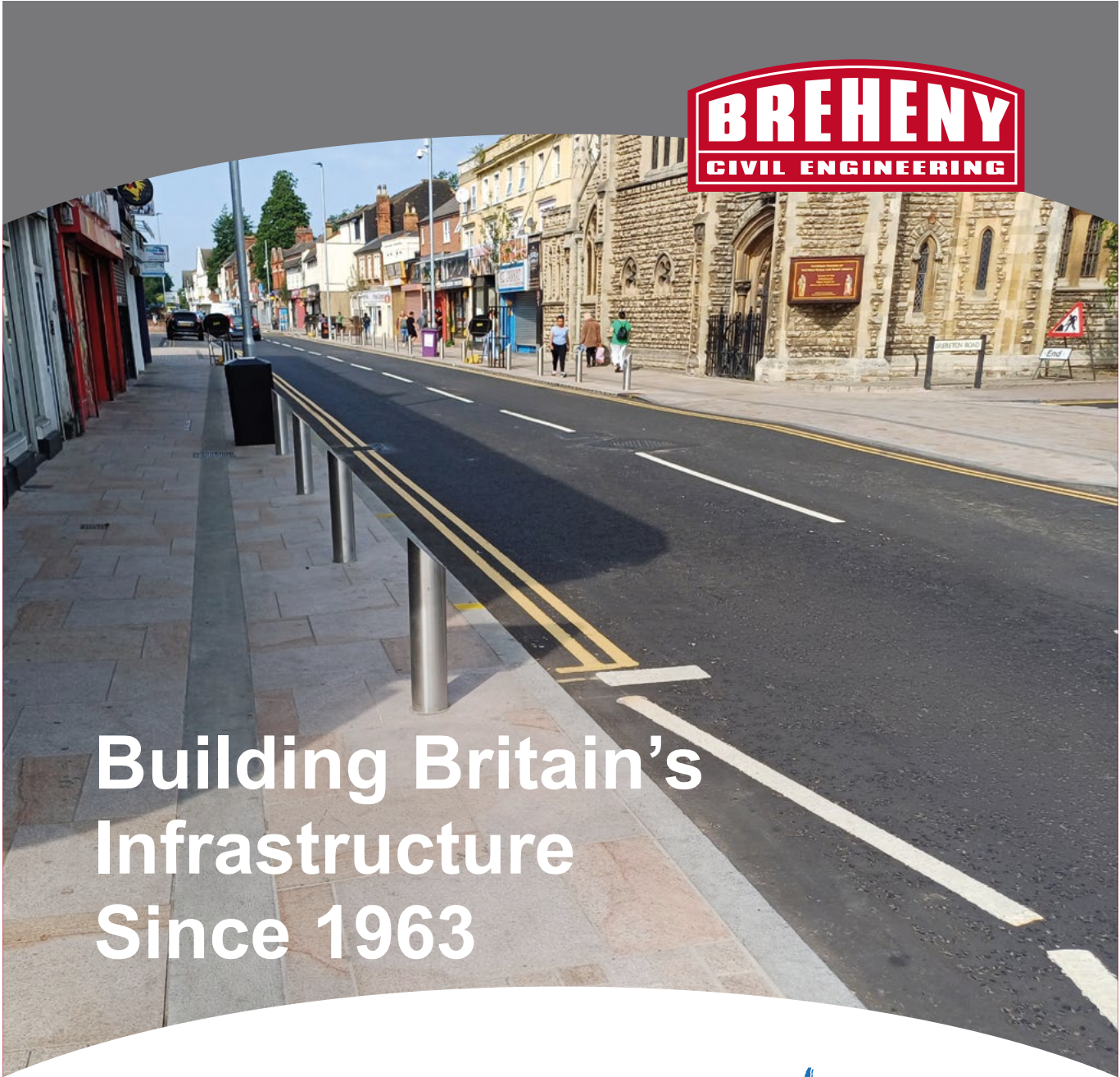
The Bedford Festival of Motoring is set to transform Bedford Town Centre into a vibrant celebration of engineering, design, and automotive passion. Over the course of the weekend, the streets will come alive with the sights and sounds of hundreds of amazing and unique vehicles, stretching from the High Street down through Mill Street, Riverside Square, and St. Paul's Square. It's an event that brings together enthusiasts, families, and curious visitors alike, all drawn by a shared appreciation for anything with an engine.

From beautifully restored classic cars to sleek modern sports cars, the festival offers a remarkable variety of vehicles on display. Visitors can expect to see everything from iconic Minis to imposing tanks, each with its own story and character. Whether you're a lifelong motoring enthusiast or simply enjoy admiring impressive machinery, there's something here to capture your imagination.

More than just a static display, the festival creates a lively and welcoming atmosphere in the heart of Bedford.

Don't forget approximately 5pm on both days Motoring Festival will lead a cavalcade of many of the featured vehicles through town to where they can head for home.

The Bedford Festival of Motoring is an opportunity to stroll through the town centre, explore the diverse lineup of vehicles, and connect with owners and fellow fans. With such a wide range of exhibits, the Bedford Festival of Motoring truly offers something for everyone—as long as it has an engine attached.






Building Britain's Infrastructure Since 1963

Proud Sponsors of the Bedford River Festival 2026



For any enquiries please contact us at: **Breheny Civil Engineering Ltd (Head Office)**
Flordon Road, Creeting St Mary, Ipswich, Suffolk, IP6 8NH

-  01449 720282
-  enquiry@breheny.co.uk
-  breheny.co.uk

-  brehenyCivils
-  breheny-civil-engineering
-  breheny-civil-engineering



Forever Our Harbour Master

Martyn Pearson 04.05.1954 – 13.12.2025

Sadly, our Bedford River Festival Harbour Master passed away last year.

Martyn was involved in the organising of the very first River Festival back in 1978 and had remained heavily involved in every River Festival since.

His passion, his knowledge and experience of everything related to the river will be greatly missed by everyone involved in the event.

Martyn's enthusiasm for events extended far beyond the River Festival as he was also involved in organising many charitable events over the years which raised considerable amounts of money for local charities.

He was also involved for many years in the TA, joining the Beds and Herts regiment as a boy. When it disbanded, he transferred to the HAC and in more recent years he was proud to be part of the Honourable Company of Pikemen and Musketeers.

Martyn truly was a remarkable man.

Martyn was incredibly proud of the Grand Parade of boats at each River Festival – so from this year The Grand Parade of Boats will be named in his honour and will be called the “The Martyn Pearson Grand Parade of Boats.”



Food & Drink

Tickle those Taste Buds!

Across this year's Bedford River Festival site you will find a wonderful selection of food and drink.

With many caterers, including some exclusively selling vegan cuisine, and of course ice cream vans, you should find it easy to find something yummy to chow down on.

There are also 9 festival bars across the event site, to ensure that you can stay hydrated throughout your visit.

The bars provided by 3B1G Events Ltd will be highlighting their environmental credentials and supporting the ethos of the festival by operating a reusable cup scheme. At each bar there will be an area for customers to return their cups should they not wish to continue the cups life by taking it home. Cups returned to the bar will be sterilised in readiness for a future event (there will be a charge for your first cup).

Russell Park

- 3 Festival Bars
- Caribbean
- Vegan Caribbean
- Chicken Shack
- Gourmet Burgers
- Greek
- Hog Roast
- Indian Street Food
- Loaded Duck
- Noodles – Chinese / Japanese
- Wings and Fries

Family Island (St. Mary's Gardens)

- Festival Bar
- Burgers
- Hot Dogs
- Fries
- Pizza

Mill Meadows

- Festival Bar
- Caribbean Food
- Carvery
- Chicken Dishes
- Duck Wraps and Burgers
- Gourmet Burgers
- Kababs Remove line please
- Noodles
- Shawarma Lebanese Pittas
- Wood Fired Pizza

Green Earth Village

- Festival Bar
- Vegan Indian
- Vegan Stews
- Raw Vegan Salads and Roti Wraps

The Embankment

- 3 Festival Bars
- Festival Market including Kielbasa sausage, tacos, burritos, Yorkshire pudding wraps, Wok man, Gyros Kebab, Exotic Meat burgers, Katsu Noodles, various sweets treats, and many more
- African Cuisine
- Loaded Nachos
- Malaysian Food
- Smashed Avocado on Toast
- Thai Food

Sports Island

- Caribbean
- Indian





BEDFORD KITE AND MOTORING FESTIVAL

19th & 20th June 2027

Open 10am to 4pm each day
on Russell Park, The Embankment
& Mill Meadows

- Food & Drink • Vehicle Exhibitions • Kite Flyers & Demonstrations • Vegan Fair • Inflatables • Crafts •
- Traditional Funfair • Watersports • Trade Stalls • Dragon Boats (Sunday) • Bandstand Concerts •

For Trader / Exhibitor / Sponsorship opportunities please contact the Events Team

@ events@bedford.gov.uk

www.bedford.gov.uk/
kiteandmotoringfestival

To find out more about this and other activities going on all year round in Bedford's parks please follow one of our digital platforms

- @BedfordEvents
- @bedfordevents
- @BedfordEventsUK



BEDFORD BOROUGH COUNCIL

Supported by the Town Centre Priority Fund
- a short walk from the event is Bedford
Town Centre, why not give it a visit!

THU 02 JULY



DEACON BLUE
WITH VERY SPECIAL GUESTS
LIGHTNING SEEDS

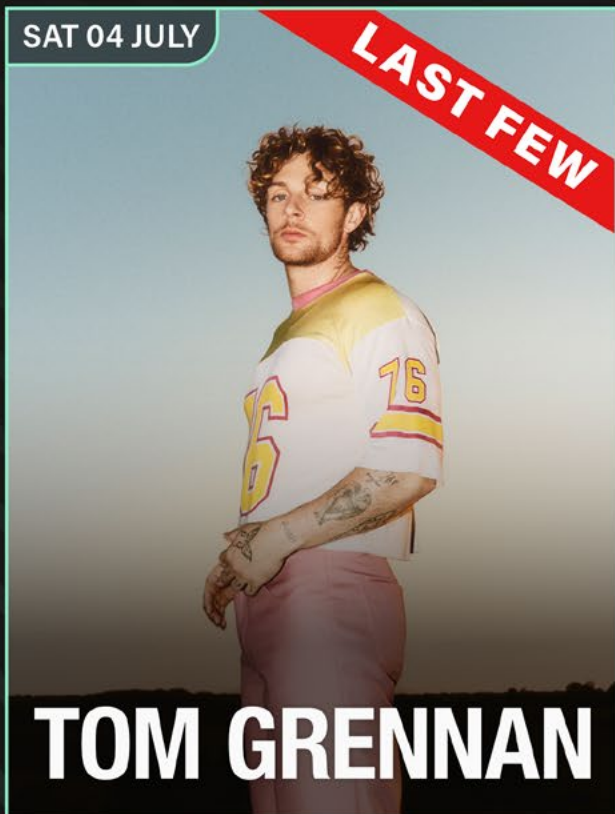
FRI 03 JULY



UB40
featuring ALI CAMPBELL
WITH VERY SPECIAL GUESTS
BITTY MCLEAN & REGGAE ROAST
FEATURING MC HORSEMAN

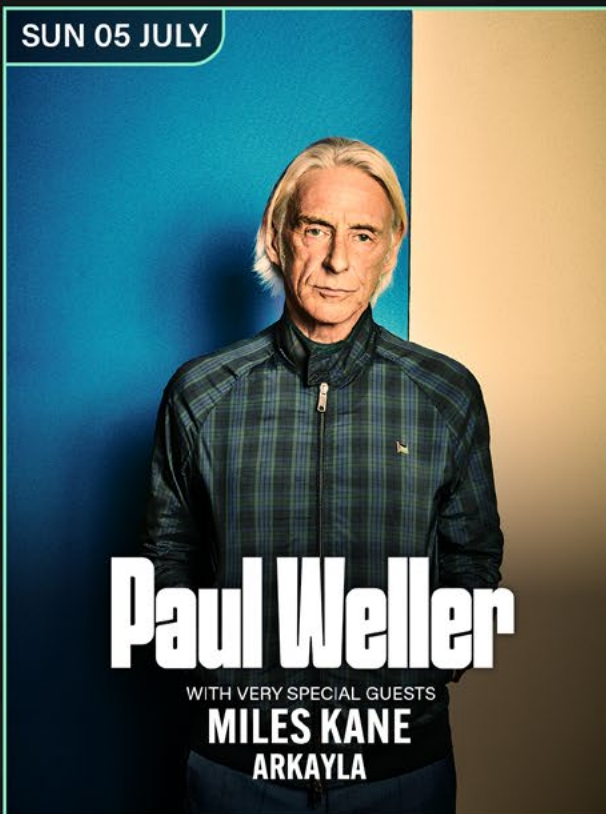
SAT 04 JULY

LAST FEW



TOM GRENNAN

SUN 05 JULY



Paul Weller
WITH VERY SPECIAL GUESTS
MILES KANE
ARKAYLA

T.k.maxx PRESENTS
BEDFORD SUMMER SESSIONS

TICKETS → SMMR.SE/BEDFORD
[@BEDFORDSMMR](https://BEDFORDSMMR)



Heidelberg Materials

Image: The UK's first hydrogen-fuelled, low-carbon asphalt plant, Criggon.

**THE
UK'S
FIRST**

**Driving
innovation,
right here
in Bedford**

heidelbergmaterials.co.uk



We have delivered a **pioneering road resurfacing trial** using a new single-layer asphalt mix, **Bedford Asphalt Surface Course (BASC)**, developed through the Bedford Network Innovation Partnership.

We're also delivering these UK and world-firsts:

- The UK's first hydrogen-fuelled, low-carbon asphalt at our Criggon plant
- Carbon-captured near-zero cement: **evozero**
- A carbon-capture facility enabling fully decarbonised cement production in Padeswood, north Wales
- Commercial-scale cement production trial using 100% net zero fuels at our Ribblesdale plant



Scan to learn more
about our journey
to net zero



**Driving change,
together.**

In partnership with **BEDFORD
BOROUGH COUNCIL**

Getting to the Event

Festival Car Parks sponsored by Stagecoach



The Bedford River Festival always draws huge crowds and you are advised to plan ahead and think about how to get here, where to park and how to get around the 105 acre site.

We would like visitors to consider how they travel to the event and where possible use public transport or use other sustainable modes of transport.

Stagecoach will be running extra buses so make it easier for people to get to and from the River Festival, please check their timetables for routes and further information.

By Car

Visitor parking is available at the town centre car parks, and Everard Meadow and Bedford International Athletics Stadium (£10 a vehicle per day), ONLY CARD PAYMENTS WILL BE ACCEPTED.

Blue badge holders can park in the Everard Meadow and Athletic Stadium car park but please be aware that this is a grass field.

Additional car parking for disabled visitors will be available at Longholme Way (MK42 0BX), and in St. Mary's Car Park (in between Borough Hall and Bedford College) Cauldwell Street (MK42 9AP) - a blue badge will be required.

Park & Ride

Elstow Park & Ride (MK42 9XF) will be running an enhanced service during the River Festival weekend. Elstow Park & Ride is located in Progress Park on the A6 - just north of the A6 junction of the A421. Pay on the bus - £3 per person, per journey.

By Bike

A new bike storage shelter has now opened in Bedford town centre, near Harpur Square enhancing the bike racks that are currently there.

To access the shelter, cyclists just need to email highways.helpdesk@bedford.gov.uk with their full name, address in Bedford Borough and phone number. They will then receive details on how to access the unit and will need to download the 'Okey Access' app on their smart phone.

By Bus

Stagecoach will be running extra busses so make it easier for people to get to and from the River Festival. Please check their timetables for routes and further information at <https://www.stagecoachbus.com/regional-service-updates/east/bedfordshire>.

By Train

[Thameslink](#) and [East Midlands Railway](#) trains come to Bedford train station - please check their websites for timings.

Additional train services will be run on Sunday 19th July between Bletchley and Bedford. For more information please visit the [London Northwestern Railway](#) website.

Getting to the Event *continued*

Festival Car Parks sponsored by Stagecoach

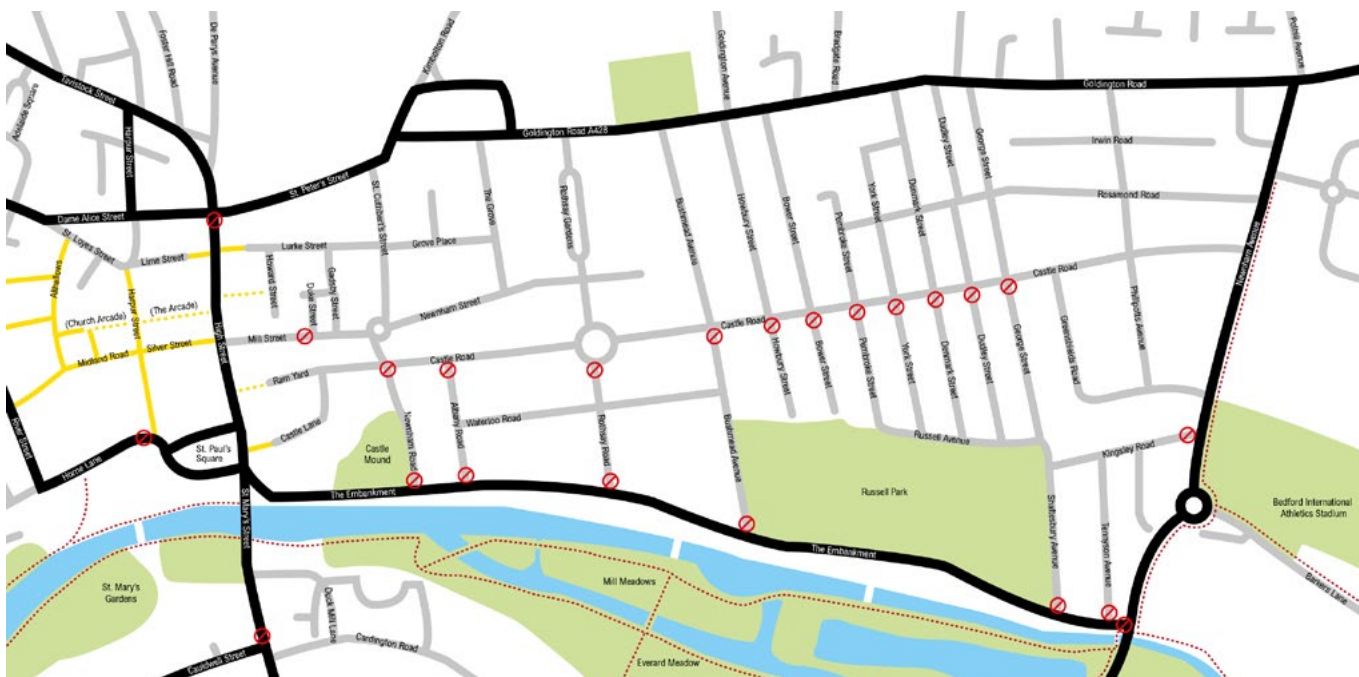


Road Closures

Please be aware of the many road closures that will be in place to allow the Bedford River Festival to happen – please see map below. We ask that if you are attending the event you are considerate of local residents and park in official car parks.

Please note that the following roads will be ‘residents only’ parking:

- Newnham Road
- Albany Road
- Waterloo Road
- Rothsay Road
- Bushmead Avenue (south of Castle Road)
- Howbury Street (south of Castle Road)
- Bower Street (south of Castle Road)
- Pembroke Street (south of Castle Road)
- York Street (south of Castle Road)
- Denmark Street (south of Castle Road)
- Dudley Street (south of Castle Road)
- George Street (south of Castle Road)
- Shaftesbury Avenue
- Kingsley Road
- Tennyson Road
- Beresford Road
- Newnham Avenue (south section)
- Russell Avenue
- The Embankment



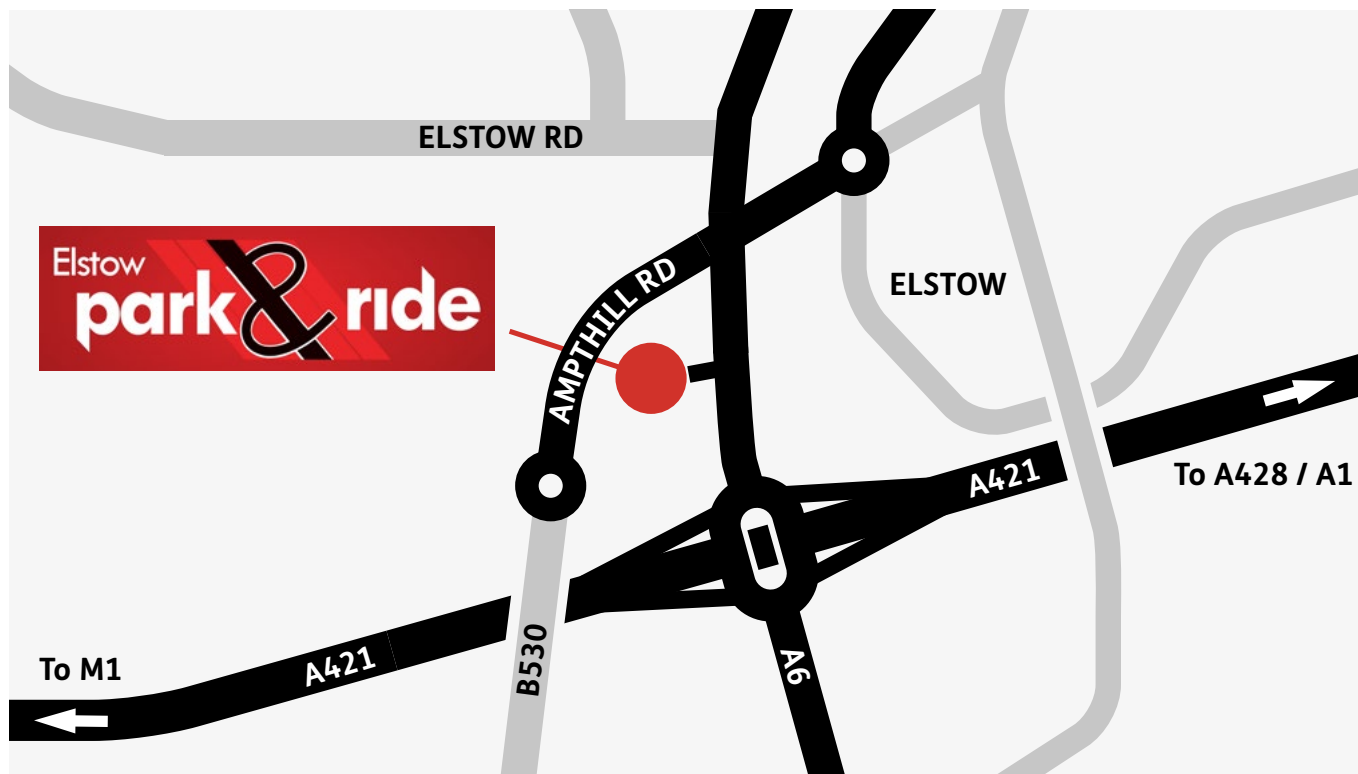
Getting to the Event *continued*

Elstow Park & Ride



Elstow Park & Ride (MK42 9XF) will be running an enhanced service during the River Festival weekend.

Grant Palmer will be operating a 15 minute service dropping off and collecting from Bedford town centre. Elstow Park & Ride is located in Progress Park on the A6 - just north of the A6 junction of the A421.



Fares

- £2 for anyone, anywhere on any routes.
- Free parking.
- Concessionary passes can not be used on 744 Elstow P&R services.

Times

- Every 15 minutes, from 9:00am until 21:45pm.
- The last bus from Bedford to Elstow departs at 22:00pm.

Additional Information

- Buses will operate to standard timetables on Saturday 18th July, with no additional services on Sunday 19th July.
- Due to festival road closures, services 42, 44, 68, 72, 73 and 74 will terminate at Kingsway, Bedford.

For more information, please visit www.grantpalmer.com.

Sponsors & Partners

Headline Sponsors:



Premium Activity Sponsors:



Activity Sponsors:



Partner Sponsors:



Friends Sponsors:



Partners of the Bedford River Festival 2026:





IF YOU SEE SOMETHING THAT
DOESN'T FEEL RIGHT
DON'T THINK
SOMEONE ELSE
WILL SORT IT

TELL SECURITY

Let's keep the party going
#BeSafeBeSound

ACT | ACTION
COUNTERS
TERRORISM

Finding out more...

For more information and downloads, please visit the Bedford River Festival website:

 <https://www.bedford.gov.uk/riverfestival>

 events@bedford.gov.uk

To find out more about this and other activities going on all year round in Bedford's parks, please follow one of our digital platforms:

 @BedfordEvents

 @bedfordevents

 @BedfordEventsUK

design & print → **DID YOU KNOW...**

WE CREATED THIS BROCHURE, & CAN DO MUCH MORE FOR YOU?

- Posters & Flyers
- Leaflets
- Brochures
- Vinyl Banners
- Large Posters (up to A0 size)
- Pop-Up Display Stands

... literally anything you could want!

> HIGH QUALITY > FAST TURNAROUND > COMPETITIVE RATES >

Call **01234 228154** or email design@bedford.gov.uk

Design & Print is a department of Bedford Borough Council

