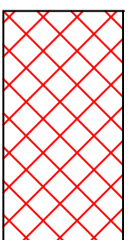
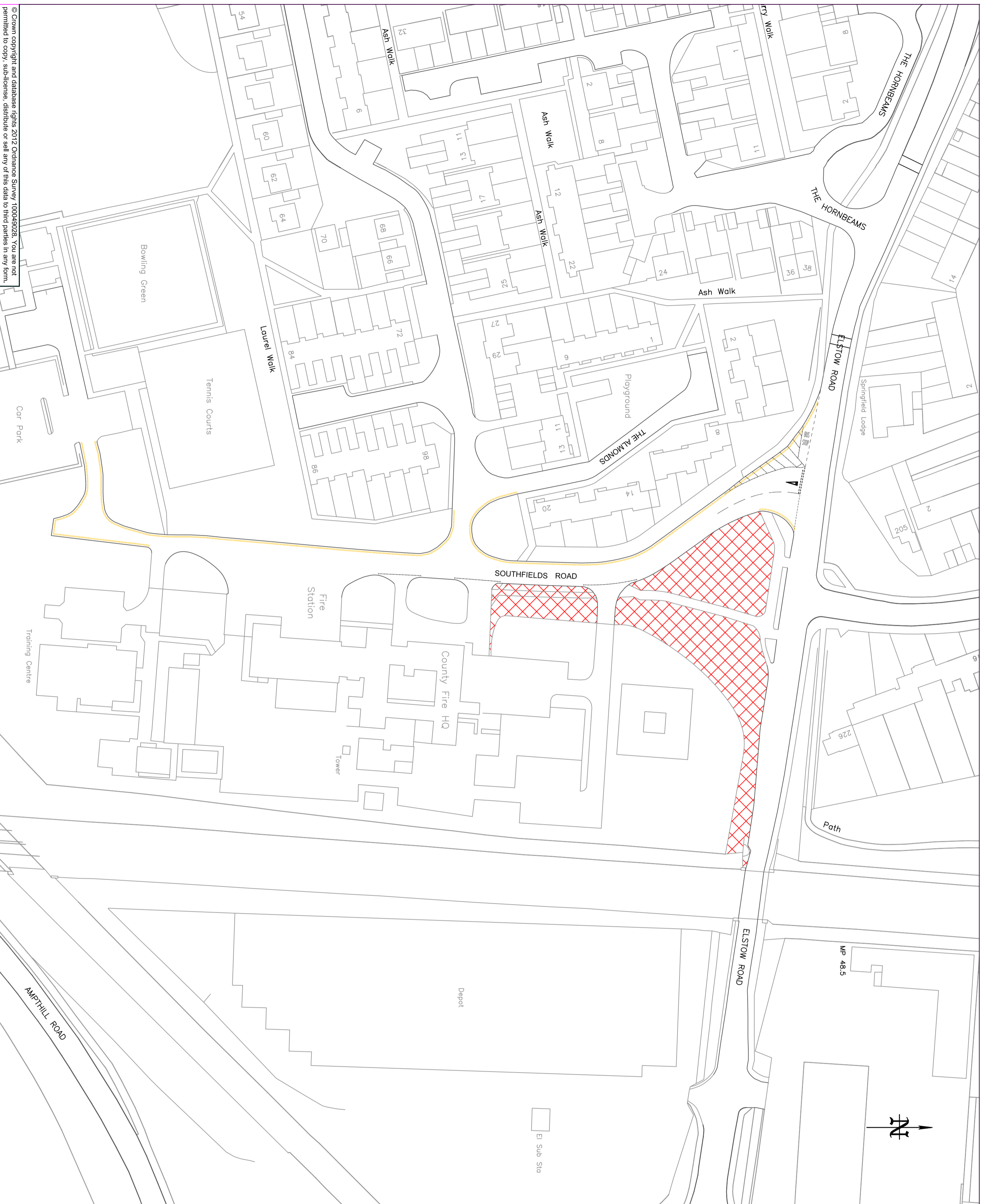


# KEY

 Proposed 'no waiting at anytime restriction (Double yellow lines)

 Proposed prohibited verge and/or footway parking restrictions



DATE	AMENDMENTS	REV	BY
xx	First Issue	0	xx



**Highways**  
BOROUGH HALL, CAULDWELL ST. BEDFORD, MK42 9AP  
Tel: (01234) 276213

**CLIENT**  
Environment and Sustainable Communities

**SCHEME**  
Southfields Rd / The Almonds Kempston

**DRAWING TITLE**  
Proposed double yellow lines  
No verge parking

**DRG No.**  
C9001.C432

**DRG STATUS**  
Consultation

SCALE @ A2	DATE	DRAWN	CHECKED
NTS	Aug 17	JS	