



BEDFORD  
BOROUGH COUNCIL

GALLAGHER  
DEVELOPMENTS

sponsoring Professional Kite Flying Activities



**Event Programme**  
24<sup>th</sup> & 25<sup>th</sup> June 2023  
Open 10am to 4pm each day  
Russell Park, The Embankment & Mill Meadows



- Food & Drink • Vehicle Exhibitions • Kite Flyers & Demonstrations • Vegan Fair • Inflatables • Crafts •
- Traditional Funfair • Watersports • Trade Stalls • Dragon Boats (Sunday) • Bandstand Concerts •



# Welcome!

**This year's Bedford Kite & Motoring Festival is cram-packed with family entertainment!**

From professional kite flying displays and exquisite vehicle exhibitions to an array of food, drink, crafts, rides and river activities, there really is something for everyone.

Using this guide, you will be able to navigate your way around the site to make sure that you don't miss a thing...

.....



## Key Timings

### Saturday 24<sup>th</sup> June 2023: Festival open from 10am to 4pm

Time	Activity	Location
All Day	Professional Kite Flying	Russell Park
	Vehicle Exhibitions	The Embankment Road, Longholme Island & Mill Meadows
	Come & Try Water Sports	Longholme Island (outside schools boat club)
	Vegan Lounge	The Embankment (river side)
10:00am to 10:15am	Cavalcade of Iconic Vehicles	The Embankment Road & Town Bridge to Mill Meadows
10:30am to 12:30pm	Bandstand Concert (see page 10)	Mill Meadows Bandstand
1:30pm to 3:30pm	Bandstand Concert (see page 10)	Mill Meadows Bandstand

### Sunday 25<sup>th</sup> June 2023: Festival open from 10am to 4pm

Time	Activity	Location
All Day	Professional Kite Flying	Russell Park
	Vehicle Exhibitions	The Embankment Road, Longholme Island & Mill Meadows
	Come & Try Water Sports	Longholme Island (outside schools boat club)
	Vegan Lounge	The Embankment (river side)
	Dragon Boat Racing with Sue Ryder	Mill Meadows Lock to Suspension Bridge
10:00am to 10:15am	Cavalcade of Iconic Vehicles	The Embankment Road & Town Bridge to Mill Meadows
10:30am to 12:30pm	Bandstand Concert (see page 10)	Mill Meadows Bandstand
1:30pm to 3:30pm	Bandstand Concert (see page 10)	Mill Meadows Bandstand

# Vehicle Exhibition Highlights

There will be 100's of classic, unique and interesting vehicles on display at this year's event. Here's a small taster of some to look out for...



## MEV Exocet

The kit car equivalent of a Formula 1 racing car, the MEV Exocet is branded as the easiest kit car to assemble in the world!

Apparently, the Mazda MX5, itself a record breaker, makes an ideal donor car for the Exocet's exoskeletal chassis.

How fast can it go? That entirely depends upon what engine you put in it, but if you were to use the Mazda engine, 60mph can be achieved in 5 seconds, we are told!



## Latil Timber Truck

In stark contrast to the MEV Exocet, we have the unique Latil Timber Truck, from France, quite possibly the slowest vehicle in the world!

As the name suggests, it spent all its time lugging logs. The company built all manner of heavy duty vehicles between 1898 and 1955 when they closed for business, this is, indeed, a very rare vehicle.



## Model C Ford

If you want old, we've got old. How about one of the oldest cars in the world? All the way from the USA, A Model C Ford that is one hundred and nineteen years old!

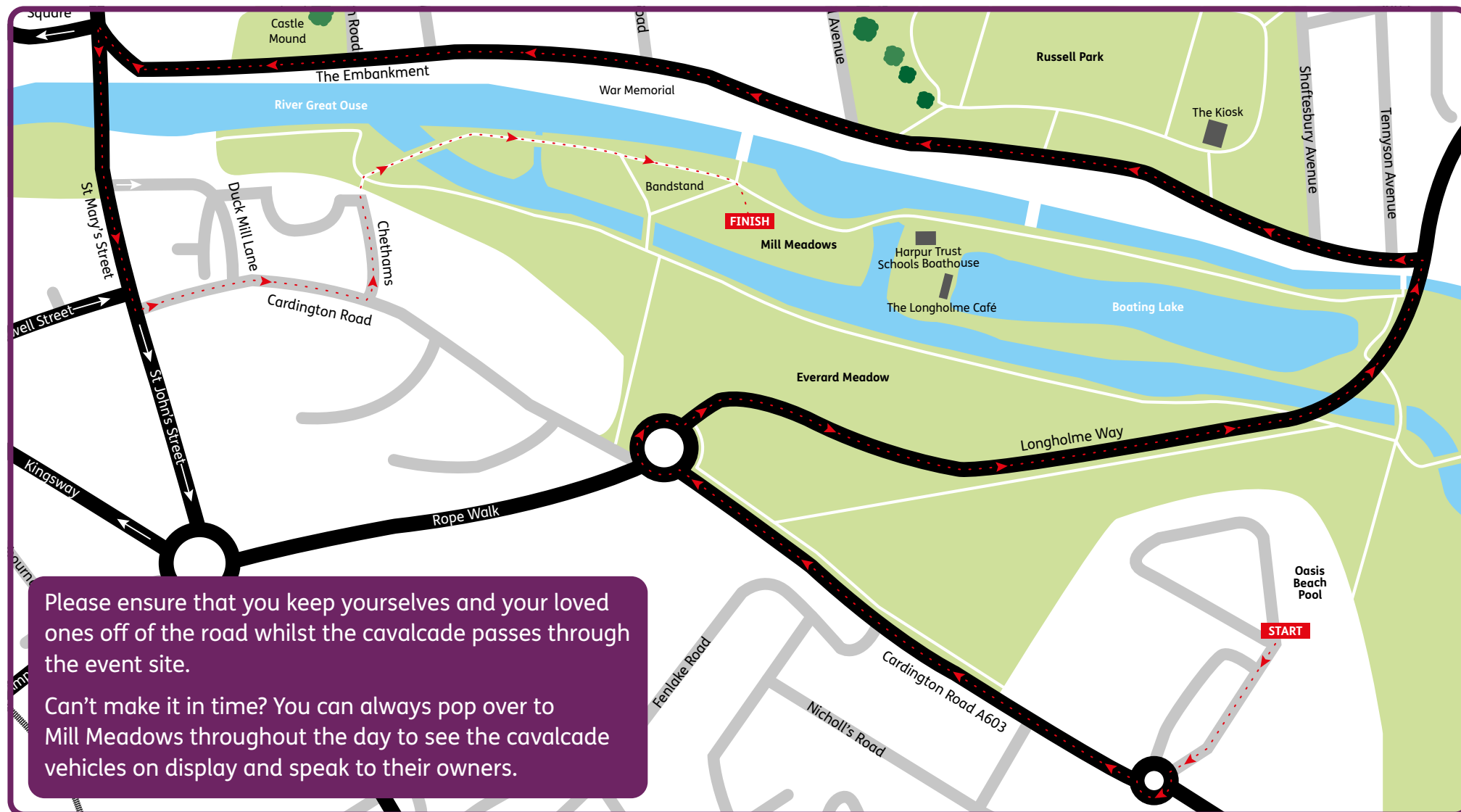
Often called The Doctor's Car, it had a scintillating top speed of 38mph (considered fast in those days).

New, it cost \$850, the equivalent of £25,635 today. Only the very affluent could afford it!

**All three vehicles are scheduled to take part in the Fab Fifty Cavalcade of Iconic Vehicles, each day at 10:00am along The Embankment Road & Town Bridge to Mill Meadows.**

# Iconic Vehicle Cavalcade

To kick off each day, you will have the opportunity to stand back and see some of your favourite vehicles in action along the cavalcade route.







Discover the future of mobility with BMW i, which offers models with both all-electric and plug-in hybrid technology. Whether it's for everyday adventures or hitting the open road, there has never been a better time to drive electric with BMW i.

From the BMW i4 that offers supreme comfort and cutting-edge functionality and the BMW iX that offers powerful acceleration to the BMW iX with distinctive design features – we have a BMW for you.

Electrify your drive today. Get in touch with Group 1 Bedford BMW to find out more.

**Group 1 Bedford BMW,**  
Clifton Parc, Caxton Road,  
Bedford, Bedfordshire,  
MK41 0GL



01234 362400



More torque, more action and more fun than ever before. The MINI Electric delivers the same feel-good joy as the Hatch is famous for, with all the excitement and efficiency of being a fully electric car.

With every last detail thought about, the MINI Electric offers innovative technology, unmatched comfort and practical touches for every journey.

Make the switch today. Get in touch with Group 1 Bedford MINI to find out more.

**Group 1 Bedford MINI,**  
Clifton Parc, Caxton Road,  
Bedford, Bedfordshire,  
MK41 0GL



01234 362450



# Professional Kite Flying Arena

**From the beautiful and elegant to the playful and gigantic, there will be a wide range of kites on display this year.**

If you can find a spot around the main arena on Russell Park you will be able to learn more about each of them from our highly experienced commentator. Don't forget to wish for some wind so that they can get up in the air to be seen in all of their glory.

Here are some to look out for...



**Vietnamese  
Angel Kites**  
A 500 year old  
design brought back  
to life using  
traditional bamboo  
and modern  
materials.











This  
is a **Steve  
Brockett Kite.**

A renowned designer  
of 'fantasy' kites,  
all dyed by  
hand on poly  
cotton.

His kites  
are in  
collections  
all over  
the world  
and seldom  
any two  
are alike.



Keep  
everything  
crossed that we  
will be able to see the  
**Indonesian Dragon  
Kite** fly in the skies  
of Bedford  
this year.

It will  
only fly  
if conditions/  
winds are good.  
This kite is 100  
metres long and  
extremely  
powerful!





# GALLAGHER

DEVELOPMENTS

## ALWAYS SEEKING NEW OPPORTUNITIES

Over 60 years experience in the field.

Our team has delivered over 150,000 homes and 10 million square feet of Commercial and Retail property.

We are looking to acquire land with development potential nationwide.

We have the ability and funding to act quickly and confidentially.

Whether you are seeking an outright sale of your land at a premium or seeking a partner to take your land through the planning process we want to hear from you.

For all enquiries, please call us on

**01926 699 699**

or email: [mail@gallagherdevelopments.com](mailto:mail@gallagherdevelopments.com)

# Family Favourites

**Bedford and the surrounding boroughs are known for an abundance of local talent.**

So this year we are handing over the spotlight to some very talented performers who will be putting on concerts throughout the weekend. Grab some refreshments, bring a blanket and sit back & relax....

## Kite & Motoring Festival Mill Meadows Bandstand Programme 2023

### Saturday 24<sup>th</sup> June

Bedford Town Concert Brass	10:30am to 12:30pm
Kempston Hammers Community Choir	1:30pm to 3:30pm

### Sunday 25<sup>th</sup> June

Sax's Cool	10:30am to 12:30pm
MK Brass	1:30pm to 3:30pm

## Enjoy what you're hearing?

The Bedford Borough Council Events Team will be running the Music in the Meadows Concerts on Sundays throughout August. For more info check out the noticeboard next to the bandstand.

**Sundays from 3pm to 5pm  
Mill Meadows Bandstand  
The Embankment, Bedford**



Music  
in the  
Meadows

**The Summer Bandstand Concerts return to the Embankment Bandstand this August.**

**Come along, bring the family & a picnic and enjoy two hours of traditional bandstand music...**

6 <sup>th</sup> August 2023	Rushden Mission Band
13 <sup>th</sup> August 2023	May Blossom Vintage Songbird
20 <sup>th</sup> August 2023	Fynnus Fogg (2pm to 5pm)
27 <sup>th</sup> August 2023	Bedford Town Band



# Traditional Funfair & Inflatables

**Nostalgia is the offering of the day at this year's festival, and our funfair sticks to this brief.**

We will be welcoming a carousel, helter skelter, ghost train and more to help you to revisit your childhood or create those same happy memories for the next generation. Rides are located on Russell Park.

With children (and adults) no doubt excited to be out exploring what this year's event has to offer, what better way to burn off some energy than on the giant inflatables located in Russell Park and Mill Meadows. All inflatables are 'pay per play', just visit a member of the inflatables team for more information.



## Come & Try Water Sports!

**On Longholme Island in front of the schools boathouse, you will find the 'Come & Try It' water sports zone.**

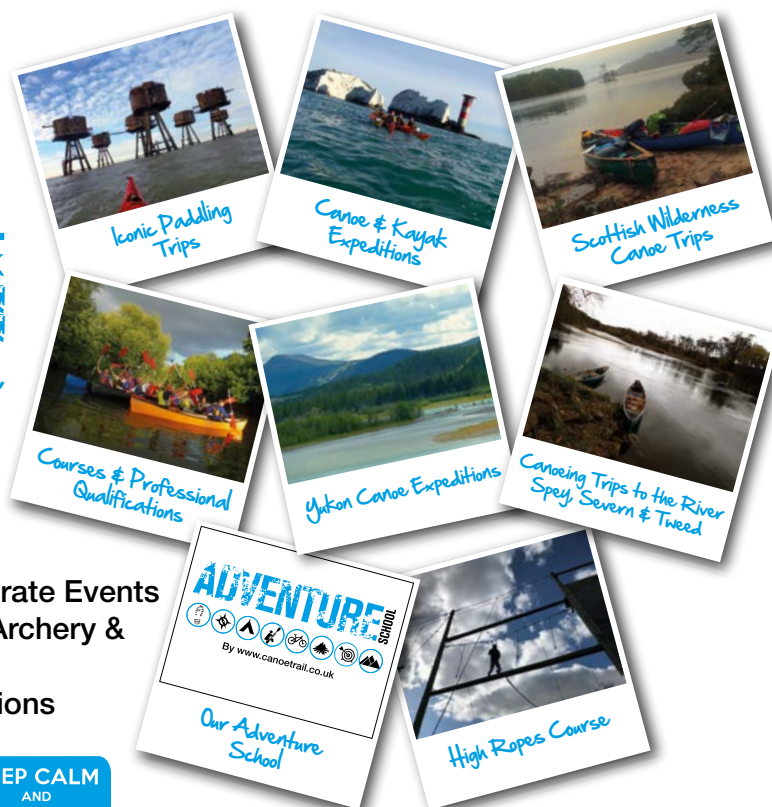
Canoeing, Kayaking and stand-up paddle boarding will be on offer for all to enjoy throughout the weekend. All equipment and guidance will be provided by the Canoe Trail team, just pop along to meet them to find out more, but don't forget to bring a towel!



*Develop Your Adventurous Side with Canoe Trail...*

- Canoe, Kayak & SUP Hire
- Wild camping at Matchstick Wood
- Multi Day Trips & Bushcraft Skills
- Kids Parties, Stag/Hen Do's & Corporate Events
- Climbing Wall, High Ropes Course, Archery & Airgun Ranges
- British Canoeing & 1st Aid Qualifications
- Canoe & Kayak Expeditions

KEEP CALM  
AND  
PADDLE ON



**T: 07934 861692 E: [admin@canoetrail.co.uk](mailto:admin@canoetrail.co.uk) [www.canoetrail.co.uk](http://www.canoetrail.co.uk)**

# Dragon Boat Racing

**This year we are pleased to be supporting Sue Ryder's first Bedford Dragon Boat Racing event.**

With teams competing to be the quickest to cross the line, they will need all of the support you can give them. Races will run throughout Sunday 25th June between the lock on Mill Meadows and the Suspension Bridge.

If you would like to sign up in the name of charity before the event, or donate to Sue Ryder, visit <https://www.sueryder.org/support-us/fundraise/events>.



Sue Ryder  
**Grief Kind Spaces**

## Grieving? You're not alone.

Grief can make us feel isolated at times. You can find support at your local Grief Kind Space where you can meet other people going through a similar experience.

There's no need to register in advance, simply come along on the day during the opening times.

Come along to our Grief Kind Space in Moggerhanger. **Drop in every Wednesday, between 3.30pm and 5.30pm at The Guinea Pub,** Bedford Road, Moggerhanger, Bedford MK44 3RG

If you'd like to find out more visit [sueryder.org/GriefKindSpaces](https://sueryder.org/GriefKindSpaces) or email us at [GriefKindSpaces@sueryder.org](mailto:GriefKindSpaces@sueryder.org)  
For more ways to access bereavement support visit [sueryder.org/griefsupport](https://sueryder.org/griefsupport)

Sue Ryder is a charity registered in England and Wales (1052070) and in Scotland (SC024578). Ref. No. 07549 © Sue Ryder Apr 2023.



## Bedford Running Festival 2023

**2nd-3rd September 2023**

Run 5k, 10k, Half Marathon or 20 miles to support our expert palliative, neurological and bereavement support.



For more information:  
visit: [sueryder.org/bedford](https://sueryder.org/bedford)  
call: **01767 642412**  
email: [stjohnsfundraising@sueryder.org](mailto:stjohnsfundraising@sueryder.org)

Calling all Run Raisers! Why not run for St Johns Hospice  
**USE DISCOUNT CODE: TSREvents**



palliative,  
neurological  
and bereavement  
support

Sue Ryder is a charity registered in England and Wales (1052070) and in Scotland (SC024578). Ref. No. 06920 © Sue Ryder July 2019.  
Creative Agreement: 14732022 - 120608





# John Bunyan Boat River Cruise



**Relax on a John Bunyan river cruise while  
attending the Kite & Motoring Festival  
Find us near Bedford Town Lock  
Mill Meadows  
No booking needed for a  
30mins return cruise,  
Adult £5, Children 5-16 years £3  
Licensed Galley Bar from 12pm**

Web:- [www.johnbunyanboat.org](http://www.johnbunyanboat.org)

# Tickle those Taste Buds

**Across this year's Bedford Kite & Motoring Festival site, you will find a wonderful selection of food and drink.**

With 12 caterers, including 5 exclusively selling vegan cuisine, and 3 ice cream stations, you should find it easy to find something yummy to chow down on.

There are also 3 bars across the festival site, including 1 on Mill Meadows, 1 on Russell Park and 1 on The Embankment to ensure that you can stay hydrated throughout your visit.

The bars provided by 3B1G Events Ltd will be highlighting their environmental credentials and supporting the ethos of the festival by operating a reusable cup scheme. At each bar there will be an area for customers to return their cups should they not wish to continue the cups life by taking it home. Cups returned to the bar will be sterilised in readiness for a future event.





# Green Earth Lounge

**Amongst the tree lined verge of The Embankment, you will find a new addition to the festival nestled in the shade.**

The Green Earth Café, Bedford are bringing us a variety of the vegan delights, from food and drink to lifestyle wears, crafts and toiletries. If a relaxed vibe is what you're looking for, then look no further.



**We're the events team from Green Earth Café, Bedford's first vegan/eco-café.**

**This year we've teamed up with the Bedford Kite and Motoring Festival to include a Green Earth Lounge at this amazing event. You'll find interesting stalls, food and drink, music, activities and places to sit and relax under the trees along Bedford's beautiful Embankment.**

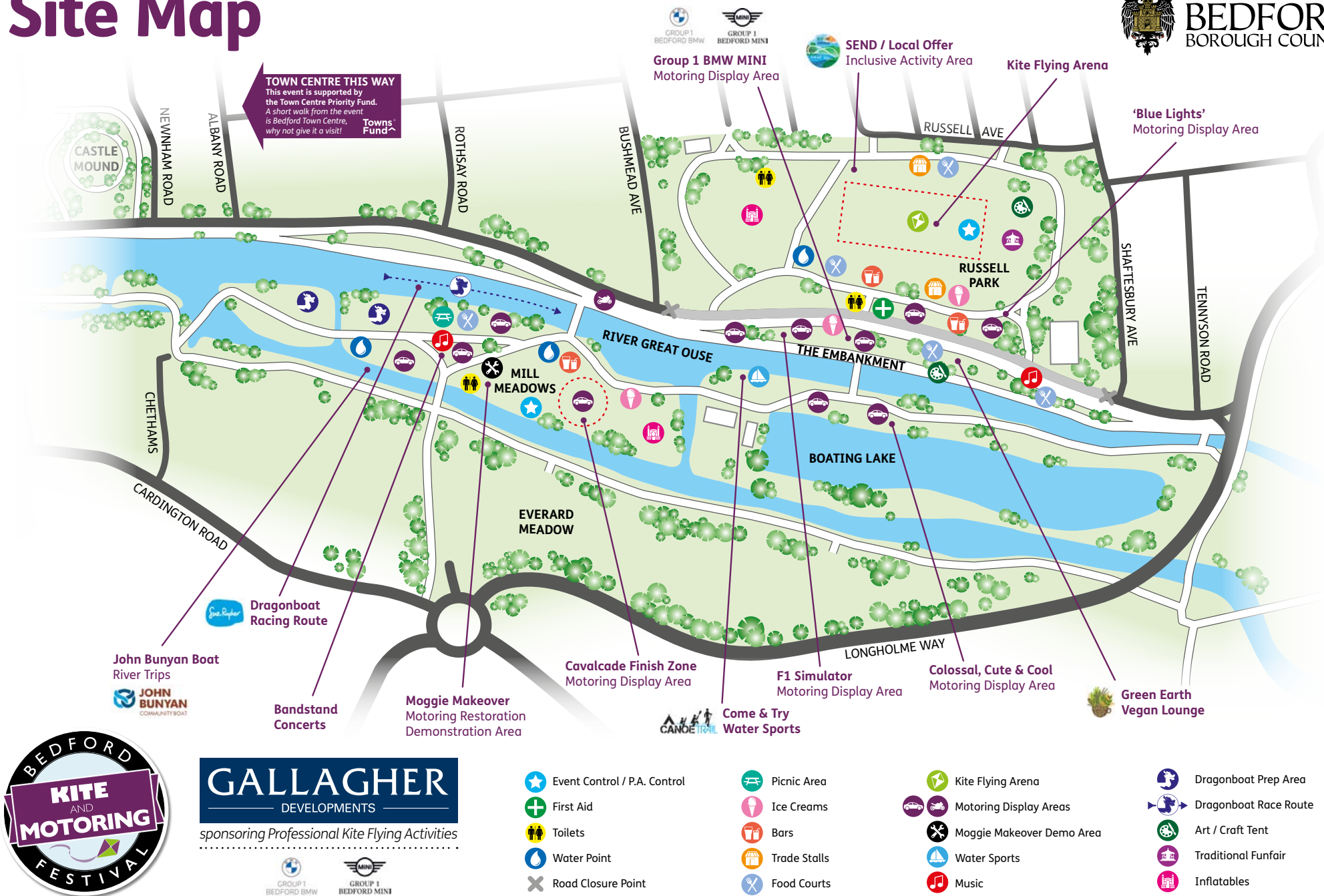
# GREEN EARTH LOUNGE

**Join us on Saturday 24th June and Sunday 25th June  
at our perfect riverside chill-out space!**

- hot food & snacks
- coffee
- fresh pressed juices
- local artisans
- interactive art
- peaceful massage and therapy area
- children's art and activities
- Guroots Den
- music
- products

**Find us opposite Russell Park, Bedford, MK40 3RH**

# Site Map





# Finding out more...

@ events@bedford.gov.uk

www.bedford.gov.uk/kiteandmotoringfestival

To find out more about this and other activities going on all year round in Bedford's parks, please follow one of our digital platforms:

f @BedfordEvents

@bedfordevents

@BedfordEventsUK

This event is supported by the  
Town Centre Priority Fund.

*A short walk from the event is  
Bedford Town Centre, why not give it a visit!*



HM Government

**Towns  
Fund**^

design  
& print



**DID YOU KNOW...**

**WE CREATED THIS BROCHURE,  
& CAN DO MUCH MORE FOR YOU?**

• Posters & Flyers  
• Leaflets

• Brochures  
• Vinyl Banners

• Large Posters  
(up to A0 size)

• Pop-Up  
Display Stands

... literally anything  
you could want!

> **HIGH QUALITY** > **FAST TURNAROUND** > **COMPETITIVE RATES** >



Call **01234 228154** or email **design@bedford.gov.uk**

Design & Print is a department of Bedford Borough Council



**BEDFORD**  
BOROUGH COUNCIL